

LOG FUEL EFFECT INSTALLER AND OWNER GUIDE

I N S P I R E

COLLECTION

THIS GUIDE IS FOR FITTING THE FUEL EFFECT

RUSTIC LOG 03/23647/0

INTO THE MODELS

800RC & 800FS

IMPORTANT

THIS GUIDE MUST BE PLACED INSIDE OR ATTACHED TO THE INSTALLER AND OWNER GUIDE SUPPLIED WITH THE GAS FIRE. IT MUST BE LEFT WITH THE OWNER.

THIS GUIDE MUST BE READ IN CONJUNCTION WITH THE INSTALLER AND OWNER GUIDE SUPPLIED WITH THE GAS FIRE.

INSTALLER AND OWNER GUIDE

All rights reserved. No part of this publication may be reproduced in any material form (including photocopying), stored in any medium by electronic means (including in any retrieval system or database) or transmitted, in any form or by any means, whether electronic, mechanical, recording or otherwise, without the prior written permission of the copyright owner.

Applications for the copyright owner's permission to reproduce any part of this publication should be made, giving details of the proposed use, to the following address: The Marketing Communications Manager, GDC Group Ltd., Millbrook House, Grange Drive, Hedge End, Southampton, SO30 2DF. UK.

Warning: Any person who does any unauthorised act in relation to a copyright work may be liable to criminal prosecution and civil claims for damages.



Valor, GDC Group Ltd., Millbrook House,
Grange Drive, Hedge End, Southampton,
SO30 2DF. UK

www.valor.co.uk

Because our policy is one of constant development and improvement, details may vary slightly from those given in this publication

INSTALLER AND OWNER GUIDE

SAFETY

This product uses fuel effect pieces containing Refractory Ceramic Fibres (RCF), which are man-made vitreous silicate fibres. Excessive exposure to these materials may cause irritation to eyes, skin and respiratory tract. Consequently, it is important to take care when handling these articles to ensure that the release of dust is kept to a minimum.

To ensure that the release of fibres from these RCF articles is kept to a minimum, during installation and servicing we recommend that you use a HEPA filtered vacuum to remove any dust and soot accumulated in and around the fire before and after working on the fire.

When replacing these articles we recommend that the replaced items are not broken up, but are sealed within a heavy duty polythene bag, clearly labelled as RCF waste. RCF waste is classed as a stable, non-reactive hazardous waste and may be disposed at a landfill licenced to accept such waste. Protective clothing is not required when handling these articles, but we recommend you follow the normal hygiene rules of not smoking, eating or drinking in the work area and always wash your hands before eating or drinking.

This appliance does not contain any component manufactured from asbestos or asbestos related products.

NOTE:

- The ceramic fuel effect may cause staining / discolouration to decorative surfaces. It is therefore advisable to protect decorative surfaces.
- The detail hand painted on the fuel effects that follow may be slightly different to that shown.

INSTALLER AND OWNER GUIDE

FITTING THE CERAMIC LOG FUEL EFFECT

1. Place Log '1' in position as shown in fig.1. Log 1 has a flat side to rest on the metal base. Locate the log with its rear touching the back wall surface. The log should rest positioned clear of the burner compartment in front as in Fig. 1.

Note: It is important that this rear log 1 is positioned correctly and does not cover the burner ports in any way.

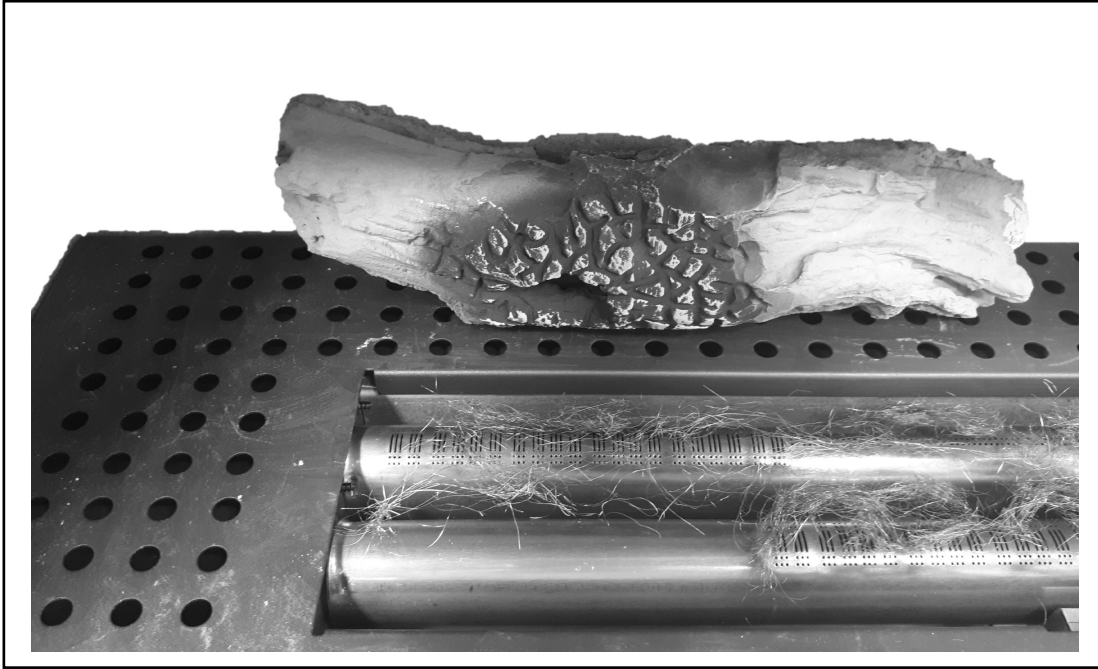


Fig. 1

2. Place Log '2' in position as shown in Fig.2. Log 2 has a flat side to rest on the metal base. Locate the log with its rear touching the back wall surface. The log should rest positioned clear of the burner compartment in front as in Fig. 2 to the RHS of Log 1.

Note: It is important that this rear log 2 is positioned correctly and does not cover the burner ports in any way.

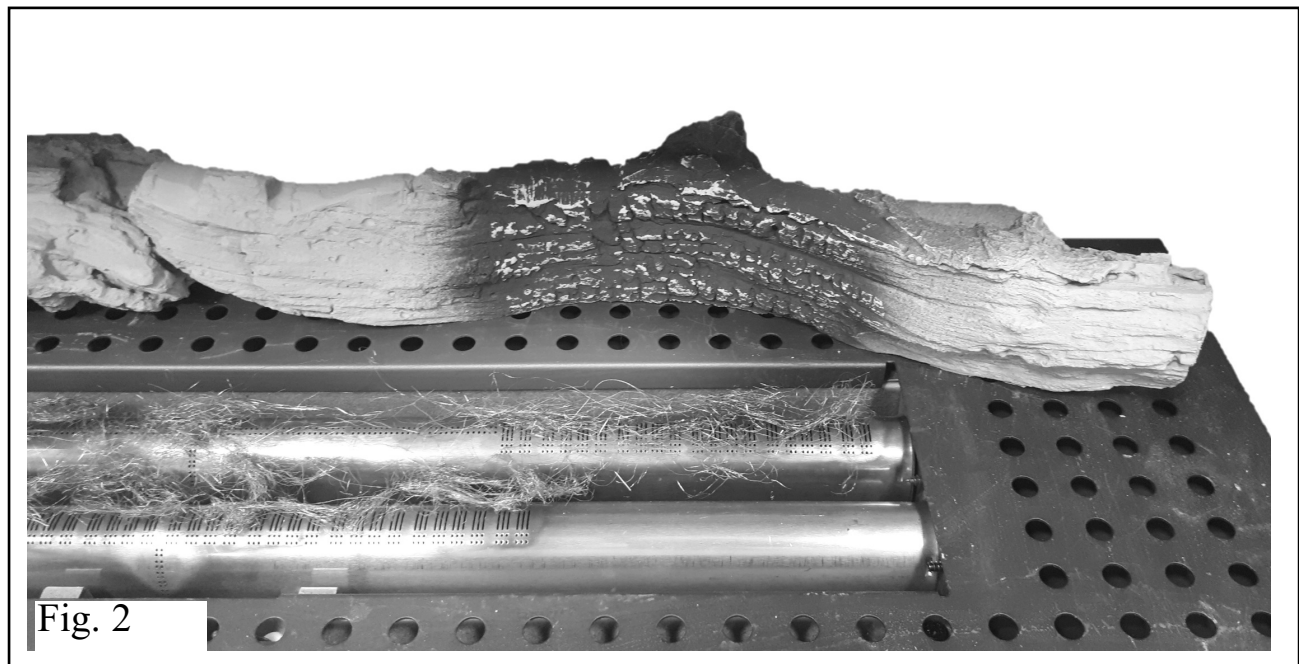


Fig. 2

INSTALLER AND OWNER GUIDE

3. Place Log '3' in position as shown in fig.3. Log 3 has a flat side to rest on the metal tray. The log does position over the front burner front RHS blank end, but only where there are no burner port holes below the log.

Note: It is important that this log 3 is positioned correctly and does not cover the burner ports in any way.

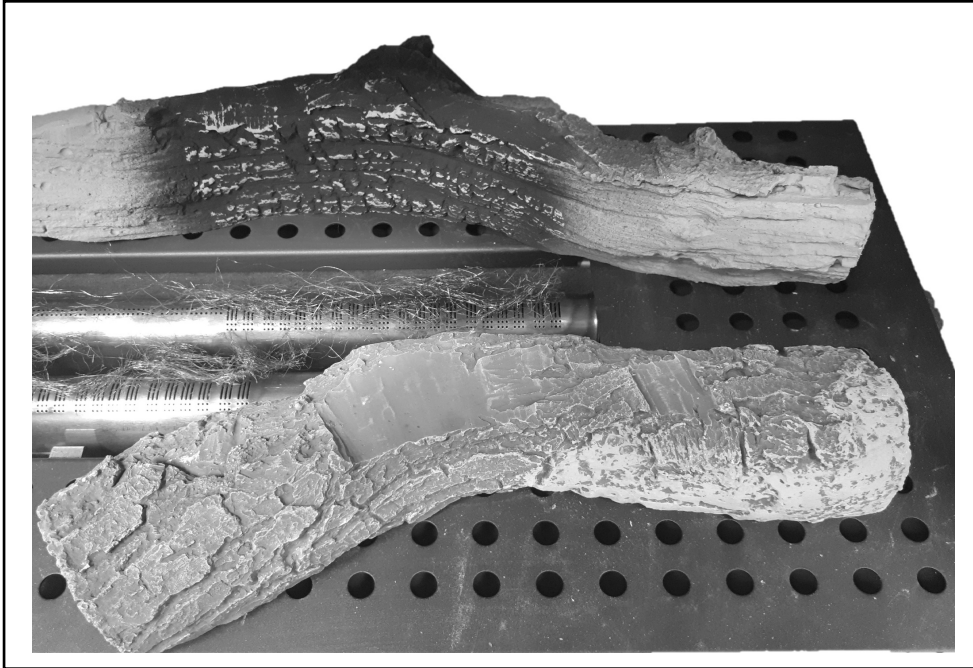


Fig. 3

4. Place Log '4' in position as shown in fig.4. Log 4 has a flat side to rest on the metal tray. The log does position over the front burner front LHS blank end, but only where there are no burner port holes below the log.

Note: It is important that this log 4 is positioned correctly and does not cover the burner ports in any way.

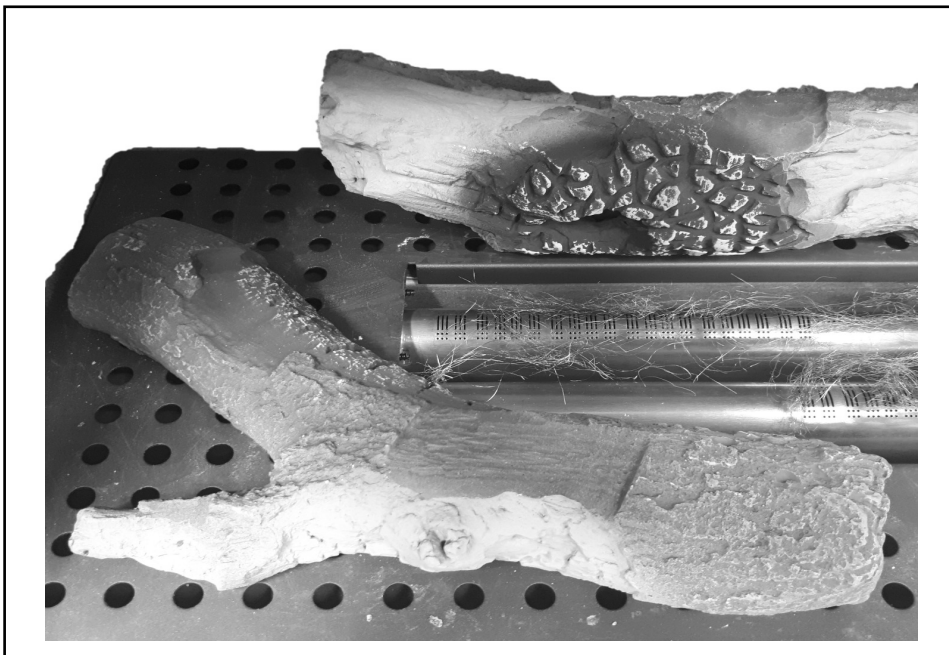


Fig. 4

INSTALLER AND OWNER GUIDE

5. Place Log '5' so that it is resting on Log '4' and to its rear on Log '1' as shown in fig.5.

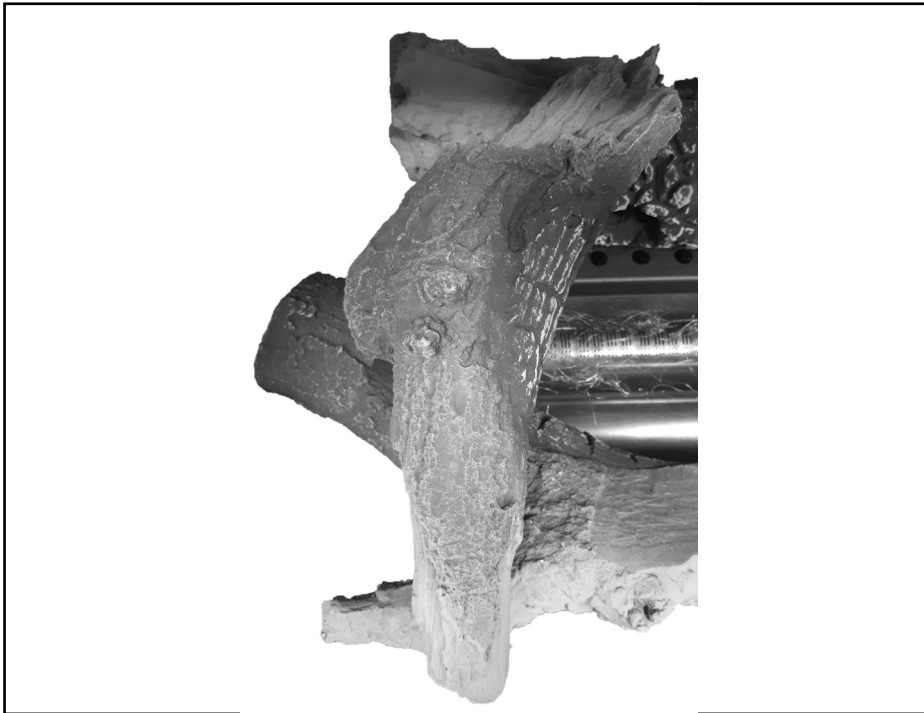


Fig. 5

6. Place Log '6' so that it is resting on Log '4' and to its rear on Log '1' as shown in fig.9.

Note: Ensure that there is an even gap maintained between log '5' and log '6' as shown in fig.6.

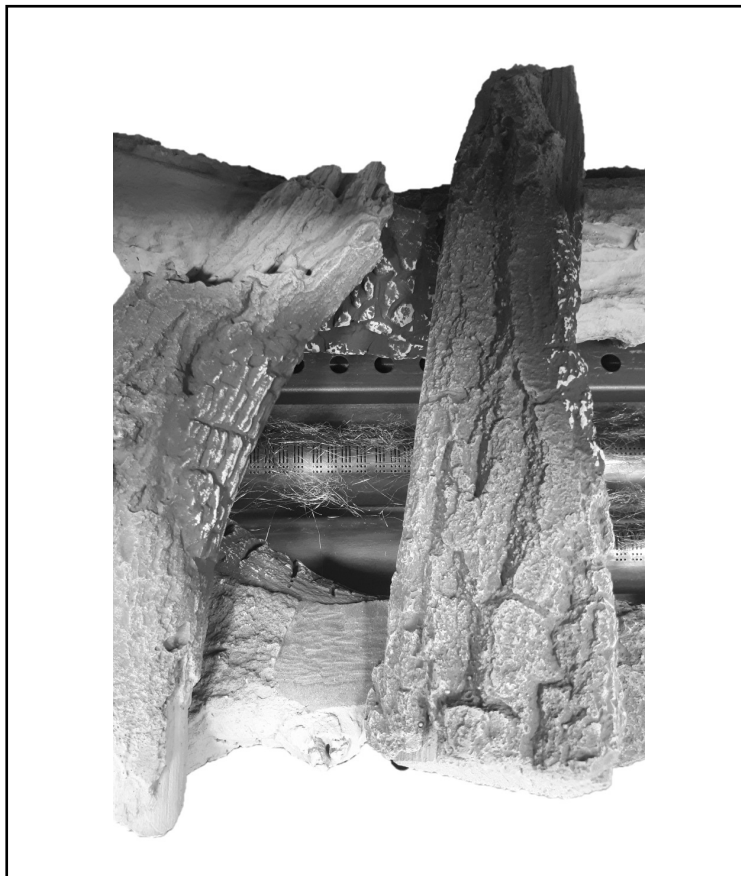


Fig. 6

INSTALLER AND OWNER GUIDE

7. Place Log '7' so that it is resting at the front on the metal base beside Log '4' and to its rear across Log '1' and Log '2' as shown in fig.7.

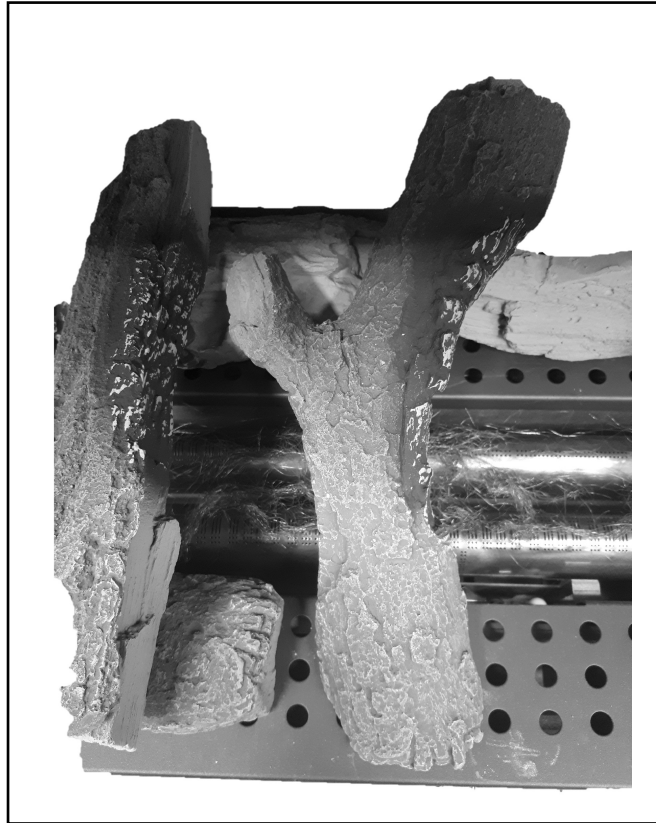


Fig. 7

8. Place Log '8' so that it is resting at the front on the metal base beside Log '7' and to its rear on Log '2' as shown in fig.8.

Note: Ensure that the branch of Log '8' rests on Log '3' as shown in fig.8.

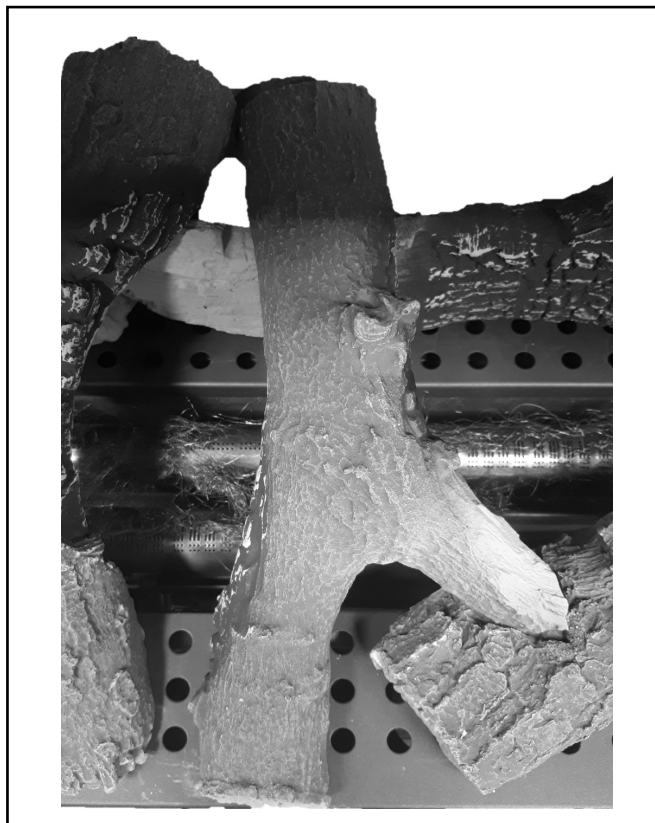


Fig. 8

INSTALLER AND OWNER GUIDE

9. Place Log '9' so that it is resting on Log '3' and to its rear on Log '2' as shown in fig.9.

Note: Ensure that there is a gap maintained between log '8' and log '9' as shown in fig.9.

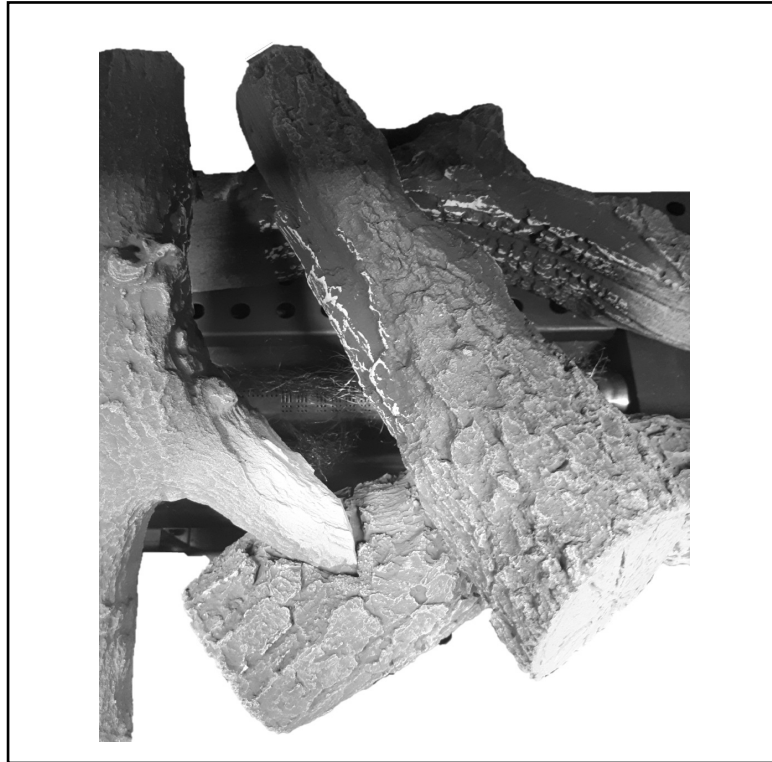


Fig. 9

10. Place Log '10' so that it is resting on Log '3' and to its rear on Log '2' as shown in fig.10.

Note: Ensure that there is a gap maintained from Log '9' as shown in fig.10.

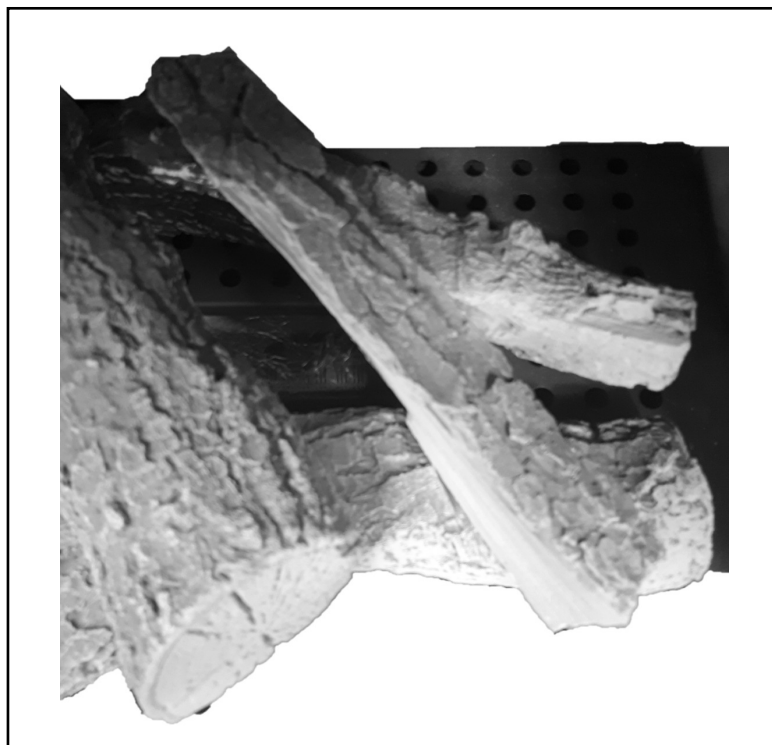


Fig. 10

INSTALLER AND OWNER GUIDE

11. Grey decorative chips - a bag of chips have been supplied along with the log set to complete the effect after all logs have been put into position.

These chips should be laid out on top of the metal tray to cover up any holes still visible after the log set is in place. **ONLY** place these chips to the outside edges of the log effect. An illustration of the chips in place can be seen in Fig 11.

Note: It is important that these chips are positioned so they don't cover or fall in on top of the burner ports or interfere with the pilot in any way.

12. Full Log placement with chips as shown below in fig. 11.



Note: It is important that all logs and chips are carefully positioned to avoid any movement during the use of this gas fire.

Note: The placement instructions for the decorative ember wool which needs to be carefully placed onto the burner below this log set is detailed in the main Installer/User guide supplied with the fire.

Please read this carefully before fitting the log set and never exceed the weight of Ember wool supplied.

