



Electric Fire Range





Imagine the difference

Transform your home with a Dimplex electric fire. Settle back and discover the Dimplex difference. Snuggle into your favourite armchair in a haven of warmth and cosiness. Treat the whole family to the benefits of a real fire but with none of its fuss and mess. Marvel how the latest flame technology can make it easily mistaken for the real thing yet it's so easy to install. Then unwind and relax in the knowledge that we've been making fires for almost 70 years. Dimplex fires are 100% efficient at point of use and most have a flame only setting, so no heat is wasted. They also have the added reassurance of BEAB approval* because we want you to enjoy the best and safest fire you can.

And the best place to start is right here.



Optiflame fires

A range of contemporary and traditional fires using our original and the world's best-selling electric flame effect.

4

Surrounds

Three surrounds ready for use with Dimplex electric inset fires.

28

Radiant fires

A collection of traditional radiant bar fires.

29

Accessories/Specifications

A range of accessories and detailed specifications for our fires.

30



*Approved or awaiting approval at time of printing

Optiflame®

The world's most popular electric flame effect

Optiflame® is the original Dimplex electric fire that revolutionised the market when first launched in 1988. Endlessly refined over the years to become the world's most popular electric flame effect, you can experience its realistic glow year round simply by switching on the 'flames' without the heating. So you can enjoy their comforting cosiness on mild but gloomy spring mornings or on dark autumn evenings.

See a video of the flame effect for yourself at dimplex.co.uk/optiflame





Pebble bed

Aspen

Modern inset fire for a contemporary twist on a classic design.

- Unique Optiflame® effect
- Supplied with pebbles and real coal for choice of fuel bed
- Stainless steel effect finish with brass effect details
- Flame effect can be used independently of heat
- Low running cost LED lighting
- 2kW fan heater with choice of two heat settings
- Inset depth of just 55mm fully inset or can be used flat-to-wall using spacer provided
- Designed to fit 16" and 18" fireplaces and all conventional flues

See page 31 for product dimensions



Coal bed

Model no. ASP20



DAN20CH-LED - chrome

Danesbury

Inset fire available in a choice of finishes to suit any interior.

- Unique Optiflame® effect
- Supplied with real coal
- Flame effect can be used independently of heat
- Low running cost LED lighting
- 2kW fan heater with choice of two heat settings
- Thermostatic heat control
- Controls concealed beneath lift-up canopy
- Inset depth of just 55mm fully inset or can be used flat-to-wall using spacer provided
- Designed to fit 16" and 18" fireplaces and all conventional flues
- Choice of finishes
 - DAN20CH-LED** - chrome
 - DAN20BR** - brass effect
 - DAN20BL** - black
 - DAN20AB** - antique brass effect

See page 31 for product dimensions





DLS20BN-LED - black nickel

Delius

Retro chic inset fire with contemporary style.

- Unique Optiflame® effect
- Supplied with white pebbles and real coal for choice of fuel bed
- Chrome effect detailing
- Flame effect can be used independently of heat
- Low running cost LED lighting
- 2kW fan heater with choice of two heat settings
- Thermostatic heat control
- Inset depth of just 55mm fully inset or can be used flat-to-wall using spacer provided
- Designed to fit 16" and 18" fireplaces and all conventional flues
- Choice of finishes
 - DLS20** - stainless steel effect
 - DLS20BN-LED** - black nickel effect



DLS20 - stainless steel

See page 31 for product dimensions



Coal bed

Elda

Inset fire with simple clean lines.

- Unique Optiflame® effect
- Supplied with pebbles and real coal for choice of fuel bed
- Stainless steel effect finish
- Flame effect can be used independently of heat
- Low running cost LED lighting
- 2kW fan heater with choice of two heat settings
- Inset depth of just 55mm fully inset or can be used flat-to-wall using spacer provided
- Designed to fit 16" and 18" fireplaces and all conventional flues

See page 31 for product dimensions



Pebble bed

Model no. ELD20



HTN20CH - chrome

Horton

Traditional styled inset fire available in a choice of finishes.

- Unique Optiflame® effect
- Supplied with real coal
- Flame effect can be used independently of heat
- Low running cost LED lighting
- 2kW fan heater with choice of two heat settings
- Thermostatic heat control
- Controls concealed beneath lift-up canopy
- Inset depth of just 55mm fully inset or can be used flat-to-wall using spacer provided
- Designed to fit 16" and 18" fireplaces and all conventional flues
- Choice of finishes
 - HTN20BR** - brass effect with black detail
 - HTN20BL** - black with brass effect detail,
 - HTN20CH** - chrome effect with black detail

See page 31 for product dimensions





WYN20AB - antique brass

Wynford

Traditional inset fire with a choice of finishes.

- Unique Optiflame® effect
- Supplied with real coal
- Flame effect can be used independently of heat
- Low running cost LED lighting
- 2kW fan heater with choice of two heat settings
- Inset depth of just 55mm fully inset or can be used flat-to-wall using spacer provided
- Designed to fit 16" and 18" fireplaces and all conventional flues
- Choice of three finishes
 - WYN20AB** - antique brass effect finish
 - WYN20BR** - brass effect finish with black detail,
 - WYN20CH** - chrome effect finish with black detail

See page 31 for product dimensions





Stamford

Traditional designed inset fire with brass or chrome effect finish.

- Unique Optiflame® effect
- Supplied with real coal
- Low running cost LED lighting
- 2kW fan heater with choice of two heat settings
- Inset depth of 75mm
- Optional spacer (SPA-OF1) available at extra cost allows use flat-to-wall
- Designed to fit 16" and 18" fireplaces and all conventional flues
- Choice of finishes
STM20 - brass effect
STM20CH - chrome effect

See page 31 for product dimensions



STM20 - brass



Cheriton

A traditionally styled free-standing fire.

- Unique Optiflame® effect
- Supplied with real coal
- Black and brass effect finish
- Flame effect can be used independently of heat source
- Low running cost LED lighting
- 2kW fan heater with choice of two heat settings
- Remote control included
- Thermostatic heat control
- Designed to fit flat-to-wall; no inset depth required
- Compatible with hearth pad accessory HPD001

See page 31 for product dimensions

Model no. CHT20



Coal bed

Detroit

Traditional free-standing fire with chrome details.

- Unique Optiflame® effect
- Supplied with real coals and white pebbles for choice of fuel bed
- Low running cost LED lighting
- Black and chrome effect finish
- Flame effect can be used independently of heat
- 2kW fan heater with choice of two heat settings
- Designed to fit flat-to-wall; no inset depth required
- Shown with optional hearth pad model no. HPD001

See page 31 for product dimensions



Pebble bed

Model no. DTT20

Castillo

Contemporary style free-standing fire.

- Unique Optiflame® effect
- Supplied with real coals and white pebbles for choice of fuel bed
- Low running cost LED lighting
- Flame effect can be used independently of heat source
- 2kW fan heater with choice of two heat settings
- Chrome and satin silver effect
- Fits flat-to-wall
- Compatible with hearth pad accessory HPD001

See page 31 for product dimensions

Model no. CST20



Zamora

A modern twist on a traditional free-standing fire.

- Unique Optiflame® effect
- Supplied with real coals and white pebbles for choice of fuel bed
- Low running cost LED lighting
- Black and chrome effect finish
- Flame effect can be used independently of heat source
- 2kW fan heater with choice of two heat settings
- Fits flat-to-wall
- Shown with optional hearth pad model no. HPD001

See page 31 for product dimensions

**Model no.
ZAM20**



Pebble bed



Coal bed



Log bed

Stockbridge

Authentic full-sized cast-iron style stove for those seeking a traditional styled fire.

- Unique Optiflame® effect
- Supplied with real coal and log effect for choice of fuel bed
- Black gloss finish
- Two opening doors for added authenticity
- Flame effect can be used independently of heat
- Low running cost LED lighting
- 2kW fan heater with choice of two heat settings
- Remote control included
- Thermostatic heat control
- Compatible with hearth pad accessory HPD001

See page 31 for product dimensions



Coal bed

Model no. SKG20BLN



Chevalier

A full-sized, elegant cast-iron stove ideal for both traditional and modern homes.

- Unique Optiflame® effect
- Supplied with real coal and log effect for choice of fuel bed
- Creamy-white gloss finish
- Opening doors for added authenticity
- Flame effect can be used independently of heat
- Low running cost LED lighting
- 2kW fan heater with choice of two heat settings
- Remote control included
- Thermostatic heat control
- Compatible with hearth pad accessory HPD001

See page 31 for product dimensions



Coal bed

Model no. CHV20N



Courchevel

A mid-sized cast-iron stove in white for a show stopping style statement.

- Unique Optiflame® effect
- Matt white finish
- Opening door for added authenticity
- Flame effect can be used independently of heat
- Low running cost LED lighting
- 2kW fan heater with choice of two heat settings
- Remote control included
- Compatible with hearth pad accessory HPD001

See page 31 for product dimensions

Model no. CVL20N



Club

Mid-sized cast-iron style electric stove.

- Unique Optiflame® effect
- Finished in matt black
- Opening door for added authenticity
- Flame effect can be used independently of heat source
- Low running cost LED lighting
- 2kW fan heater with choice of two heat settings
- Remote control included
- Compatible with stove pipe accessory STP001 and hearth pad HPD001

See page 31 for product dimensions

Plinth shown is not supplied. See page 30

Model no. CLB20



Brayford

Compact stove designed to fit in or on a standard fireplace and hearth.

- Unique Optiflame® effect
- Log effect fuel bed
- Black cast effect finish
- Flame effect can be used independently of heat
- Low running cost LED lighting
- 2kW fan heater with choice of two heat settings
- Remote control included
- Compatible with hearth pad accessory HPD001

See page 31 for product dimensions

Model no. BFD20N

Springborne

Compact stove designed to fit in or on a standard fireplace and hearth.

- Unique Optiflame® effect
- Supplied with real coal fuel bed
- Black cast effect finish
- Two opening doors for added authenticity
- Flame effect can be used independently of heat
- Low running cost LED lighting
- 2kW fan heater with choice of two heat settings
- Remote control included
- Compatible with hearth pad accessory HPD001

See page 31 for product dimensions

Model no. SBN20N



SBN20N - Springborne

Tango

Traditional 'cast iron' style stove in matt black finish.

- Unique Optiflame® effect
- Supplied with real coal fuel bed
- Black cast effect finish
- Two opening doors for added authenticity
- Flame effect can be used independently of heat source
- Low running cost LED lighting
- 2kW fan heater with choice of two heat settings
- Remote control included
- Compatible with hearth pad accessory HPD001

See page 31 for product dimensions

Model no. TNG20R



TNG20R - Tango



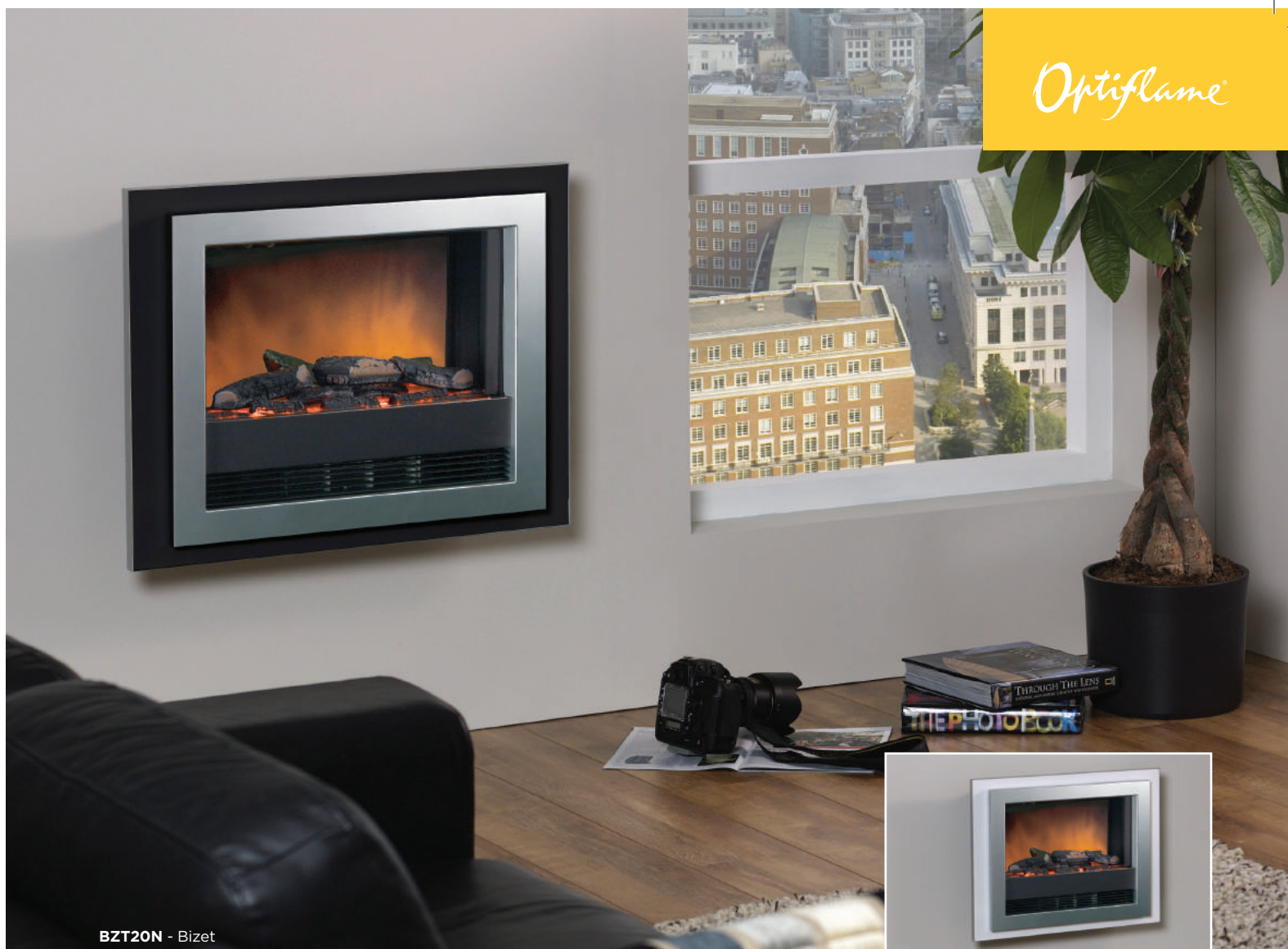
SP16

A contemporary wall mounted fire with large flame picture area for a stunning centre piece to your room.

- Unique Optiflame® effect
- Optiglo® glowing log bed
- Black finish
- Flame effect can be used independently of heat
- Low running cost LED lighting
- 2kW fan heater with choice of two heat settings
- Chassis can also be inset so that only the frame protrudes
- Concealed fan heater
- Remote control included

See page 31 for product dimensions

Model no. SP16



BZT20N - Bizet



Bizet - with white frame

Bach and Bizet

Modern wall fires designed for use either wall-mounted or recessed.

- Unique Optiflame® effect
- Bizet - finished in silver grey with a reversible frame finished in gloss black and gloss white
- Bach - Dark grey frame with black front
- Flame effect can be used independently of heat
- Low running cost LED lighting
- 2kW fan heater with choice of two heat settings
- Remote control included
- Thermostatic heat control

See page 31 for product dimensions

Model no. BZT20N - Bizet, **BCH20** - Bach



BCH20 - Bach



Chadwick

An elegant free-standing suite ideal for traditional homes.

- Unique Optiflame® effect
- Log effect fuel bed
- Stone effect surround and dark grey fire
- Flame effect can be used independently of heat
- Low running cost LED lighting
- 1.2kW fan heater

See page 31 for product dimensions

Model no. CDW12WWN



MZT20BL - black

Mozart

Free-standing suite in a choice of finishes for modern and traditional rooms.

- Unique Optiflame® effect
- Log effect fuel bed
- Surround has stone-effect finish with black marble-effect back panel
- Flame effect can be used independently of heat
- Low running cost LED lighting
- 2kW fan heater with choice of two heat settings
- Concealed controls
- Choice of finishes
MZT20 - cream
MZT20BL - black

See page 31 for product dimensions



MZT20 - cream

Surrounds

Fully assembled MDF surround, back panel and hearth, purpose designed for use with Dimplex electric fires. No structural alterations needed as surrounds are freestanding – all you need is a flat wall and a power point for the fire.

For use with electric fires only.



Holwell

- Surround finished in maple effect with textured black back panel and hearth
- Compatible with all of the current Dimplex 16"/18" inset fires

Model no. GDS1A



Rockbourne

- Natural stone effect surround
- Compatible with all of the current Dimplex 16"/18" inset fires

Model no. GDS3



Ashmore

- Surround finished in mahogany effect with textured cream back panel and hearth
- Compatible with all of the current Dimplex 16"/18" inset fires

Model no. GDS1

Radiant bar fires



Lymington

- A free-standing fire with unique Optiflame® coal effect
- 2kW radiant heat, plus 0.5kW convected heat
- Flame effect can be used independently of heat source
- 'Economiser' control
- Finished in matt black with brass effect trim

Model no. LYM28E



Theme

- Attractive cherry finish surround
- Flickering flame coal effect
- 2kW of radiant heat with 'Economiser' control
- Effect can be used independently of heat source
- 0.8kW convector with variable thermostat for background warmth

Model no. 316CHE



Yeominster

- Traditional freestanding fire
- Flickering log effect
- 2kW radiant heat with 1kW/2kW heat selection
- Effect can be used independently of heat source

Model no. YEO20



Optima

- Freestanding or wall-mounted
- Attractive cherry finish surround
- 2kW of radiant heat with 'Economiser' control
- Effect can be used independently of heat source
- Flickering flame coal effect
- Choice of heat settings

Model no. 314CHE



Lyndhurst

- Stylish black canopy
- Flickering flame log effect
- 2kW of radiant heat with 'Economiser' control
- Effect can be used independently of heat source
- 0.5kW of thermostatically controlled convected heat
- Choice of heat settings

Model no. 430RCE/B

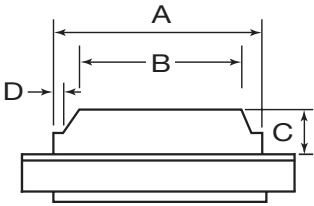
Product dimensions please see page 31. Plinths/hearths not supplied.

Detailed dimensions – Optiflame® electric inset fires

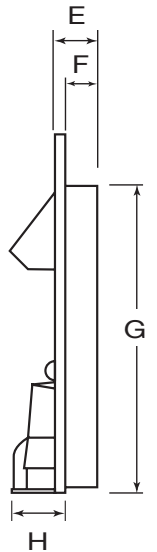
| | A | B | C | D | E | F | G | H |
|------------------|-----|-----|----|----|----|----|-----|-----|
| Aspen | 390 | 344 | 55 | 10 | 75 | 55 | 555 | 107 |
| Danesbury | 390 | 344 | 55 | 10 | 70 | 55 | 555 | 115 |
| Delius | 390 | 344 | 55 | 10 | 75 | 55 | 555 | 125 |
| Elda | 390 | 344 | 55 | 10 | 70 | 55 | 555 | 107 |
| Horton | 390 | 344 | 55 | 10 | 75 | 55 | 555 | 115 |
| Stamford | 364 | 364 | 70 | - | 84 | 75 | 565 | 107 |
| Wynford | 390 | 344 | 55 | 10 | 70 | 55 | 555 | 100 |



PLAN VIEW -
INSET FIRES



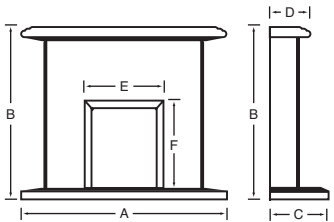
PROFILE VIEW -
INSET FIRES



All dimensions are shown in millimetres. Please allow ± 5mm tolerance.

Surrounds

| Surrounds | Model No. | Finish of surround | Finish of back panel | A | B | C | D | E | F | Weight of surround |
|------------------|-----------|----------------------|--|------|------|-----|-----|-----|-----|--------------------|
| Holwell | GDS1A | Maple effect | Black back panel & hearth | 1200 | 1113 | 395 | 280 | 420 | 580 | 43kg |
| Ashmore | GDS1 | Mahogany effect | Cream back panel & hearth | 1200 | 1113 | 395 | 280 | 420 | 580 | 43kg |
| Rockborne | GDS3 | Natural stone effect | Natural stone effect back panel & hearth | 1200 | 1085 | 350 | 253 | 420 | 580 | 48kg |



All dimensions are shown in millimetres. Please allow ± 5mm tolerance.

Accessories

SPACER KITS

SPA-OF1 – to fit Stamford.

HEARTH PAD

- Suitable for electric fires and electric stoves ONLY
- Slate effect finish (HPD001)
- Approximate dimensions: 15mm (H) 800mm (W) 380mm (D)



HPD001 shown on page 15, 16, 17, 22 and page 23.

STOVE PIPE

- Stove pipe kit compatible with Club, Springborne, Tango and Brayford
- ‘Slot together’ construction allows for two different height/depth options#
- Part no. STP001

Option A#



Option B#



Technical Specification

| Optiflame fires | Page number | Total output in kW | Power consumption on effect only in Watts | Height (mm) | Width (mm) | Total depth (mm) | Depth of inset (mm) (if applicable) |
|---|--------------|--------------------|---|-------------|------------|------------------|-------------------------------------|
| Aspen ASB20 | 5 | 2.0 | 9 | 617 | 520 | 162 | 55 |
| Bach BCH20 | 25 | 2.0 | 9 | 600 | 696 | 183 | - |
| Bizet BZT20N | 25 | 2.0 | 9 | 621 | 750 | 183 | - |
| Brayford BFD20N | 22 | 2.0 | 10 | 545 | 440 | 310 | - |
| Castillo CST20 | 17 | 2.0 | 9 | 665 | 603 | 226 | - |
| Chadwick CDW12WWN | 26 | 1.2 | 9 | 915 | 934 | 297 | - |
| Cheriton CHT20 | 15 | 2.0 | 9 | 682 | 639 | 194 | - |
| Chevalier CHV20N | 19 | 2.0 | 10 | 640 | 620 | 390 | - |
| Club CLB20 | 21 | 2.0 | 10 | 597 | 510 | 340 | - |
| Courchevel CVL20N | 20 | 2.0 | 10 | 597 | 510 | 340 | - |
| Danesbury DAN20AB, DAN20BL, DAN20BR, DAN20CH-LED | 6-7 | 2.0 | 9 | 620 | 518 | 170 | 55 |
| Delius DLS20, DLS20BN-LED | 8 | 2.0 | 9 | 617 | 520 | 180 | 55 |
| Detroit DTT20 | 16 | 2.0 | 9 | 665 | 603 | 226 | - |
| Elda ELD20 | 9 | 2.0 | 9 | 617 | 514 | 162 | 55 |
| Horton HTN20BL, HTN20BR, HTN20CH | 10-11 | 2.0 | 9 | 621 | 521 | 170 | 55 |
| Mozart MZT20, MZT20BL | 27 | 2.0 | 9 | 857 | 920 | 375 | - |
| SP16 | 24 | 2.0 | 14 | 525 | 1200 | 182 | - |
| Springborne SBN20N | 23 | 2.0 | 10 | 545 | 440 | 310 | - |
| Stamford STM20, STM20CH | 14 | 2.0 | 9 | 615 | 465 | 195 | 75 |
| Stockbridge SKG20BLN | 18 | 2.0 | 10 | 640 | 620 | 390 | - |
| Tango TNG20R | 23 | 2.0 | 10 | 545 | 440 | 310 | - |
| Wynford WYN20AB, WYN20BR, WYN20CH | 12-13 | 2.0 | 9 | 620 | 520 | 155 | 55 |
| Zamora ZAM20 | 17 | 2.0 | 9 | 665 | 603 | 226 | - |

Radiant bar fires

| | | | | | | | |
|---------------------------|-----------|-----|-----|-----|-----|-----|---|
| Lymington LYM28E | 29 | 2.5 | 130 | 690 | 720 | 275 | - |
| Lyndhurst 430RCE/B | 29 | 2.5 | 120 | 680 | 710 | 225 | - |
| Optima 314CHE | 29 | 2.0 | 120 | 540 | 775 | 215 | - |
| Theme 316CHE | 29 | 2.8 | 130 | 610 | 775 | 265 | - |
| Yeominster YEO20 | 29 | 2.0 | 60 | 395 | 631 | 214 | - |

Notes

See relevant product page for opening requirements.
All dimensions are shown in millimetres. Please allow +/- 5mm tolerance.

After Sales Service

If you require after sales service please visit www.dimplex.co.uk/support.

CE Mark

Our products carry the CE mark complying with European safety standards and the European Standard for electro magnetic compatibility.

British Electrotechnical Approvals Board BEAB Approved

The mark of the British Electrotechnical Approvals Board signifies that the appliance bearing it has been produced to the stringent safety requirements for domestic electrical appliances as laid down in BSEN60335.

All Dimplex electric fires are approved by BEAB or awaiting approval at time of printing.

Specifications

Dimplex policy is one of continuous improvement; the Company therefore reserves the right to alter specifications without notice. Although every care has been taken in the reproduction of product finishes in this brochure, the colour photographs and the flame effects should be taken only as a guide. The information contained in this brochure is correct at the time of printing. You are advised to consult your dealer before purchasing. For a list of your local retailers please visit www.dimplex.co.uk

The Dimplex Range

Dimplex offers the widest range of electric space and water heating products in the world – nearly 700 – to meet almost any heating need. In addition to this publication, we have a wide range of brochures for both domestic and commercial applications. Please visit our website for more information.

Dimplex Website

Our website is full of information which may be useful to you including:

- Videos of Optiflame effects
- Installation and operating instructions
- How to buy spare parts

Visit www.dimplex.co.uk/fires today!

Selected surrounds featured in this brochure were supplied by the companies listed below. Any surround not listed is no longer available. Please note that some of the surround designs listed may have been discontinued by their manufacturers.

Aspen **ASP20**
Danesbury Black **DAN20BL**
Delius **DLS20**
Allwood Fireplaces Ltd, Units 3
Spark Business Park, Hamilton Road,
Stockport, Cheshire SK1 2AE
Telephone: 0161 300 4363

Danesbury Antique Brass **DAN20AB**
OER, Fireplace Works, Normacot Road,
Longton, Stoke on Trent, Staffordshire
ST3 1PN
Telephone: 01782 319350
www.oerfireplaces.com

Horton **HTN20BR**
Horton **HTN20BL**
Wynford **WYN20CH**
Wynford **WYN20BR**
Be Modern Group, Western
Approach, South Shields,
Tyne & Wear NE33 5QZ
Telephone: 0191 455 3571

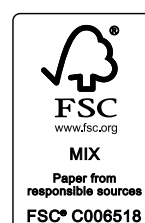
© Dimplex All rights reserved. Material contained in this publication may not be reproduced in whole or in part, without prior permission in writing of Dimplex. Dimplex is a Registered Trade Mark in the United Kingdom. All Optiflame fires are protected by patent nos GB2230335, AU621713, USA4965707, IE63651 and NZ232435. Opti-myst and Opti-V effects are protected by multiple worldwide patents. All the products shown in this brochure are protected by intellectual property rights owned by Dimplex or members of the Glen Dimplex Group on an international basis. The Glen Dimplex Group of Companies will actively protect these rights.



Dimplex is a Glen Dimplex Heating & Ventilation brand

Millbrook House, Grange Drive, Hedge End, Southampton, SO30 2DF. Tel: 0344 879 3588. Email: customer.services@glendimplex.com

Glen Dimplex Ireland
Airport Road, Cloghran, Co. Dublin K67 DT89
+353 (0)1 8424833



D1825/0318