

#### Dimensions

(millimetres)

Model(s)	Specification
WFE 3TNB	3kW, Switch, Thermostat & 7 Day Timer - Black
WFE 3TNS	3kW, Switch, Thermostat & 7 Day Timer - Silver

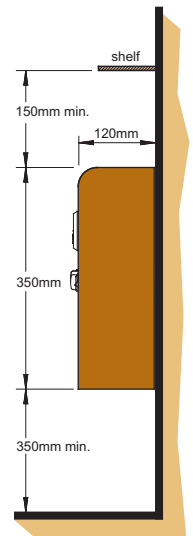
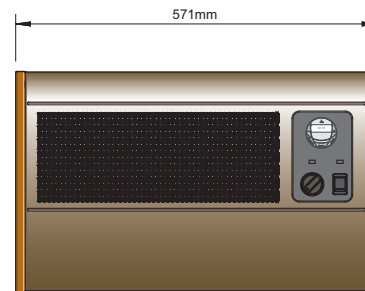


Fig. 1

THESE INSTRUCTIONS SHOULD BE READ CAREFULLY AND RETAINED FOR FUTURE REFERENCE

#### Important Safety Advice

**WARNING – THIS APPLIANCE MUST NOT BE USED IN A BATHROOM.**

**WARNING – DO NOT USE THIS HEATER IN THE IMMEDIATE SURROUNDINGS OF A BATH, A SHOWER OR A SWIMMING POOL.**

**WARNING – THIS HEATER MUST NOT BE LOCATED IMMEDIATELY ABOVE OR BELOW A FIXED SOCKET OUTLET.**

**DO NOT USE THE HEATER UNTIL IT IS WALL MOUNTED CORRECTLY.**

The heater carries a warning 'Do Not Cover' to alert the user to the risk of overheating that exists if the heater is accidentally covered.

Keep combustible materials such as drapes and other furnishings clear from the front of the heater. Do not use heater to dry your laundry.

**NEVER** cover or obstruct in any way the air inlet slots at the front of the heater or the heat outlet slots in the base of the heater.

This appliance is not intended for use by children or other persons without assistance or supervision if their physical, sensory or mental capabilities prevent them from using it safely. Children should be supervised to ensure that they do not play with the appliance.

If young children, the aged, or infirm are likely to be left in the vicinity of the heater, we advise that adequate precautions should be taken. We recommend that a guard be fitted to ensure contact with the heater is avoided and objects cannot be inserted into the product.

**WARNING:** In order to avoid a hazard due to inadvertent resetting of the thermal cut-out, this appliance must not be supplied through an external switching device, such as a timer, or connected to a circuit that is regularly switched on and off by the utility. Do not use where excessive dust or moisture is present.

Do not use where excessive dust or moisture is present. For further information, please contact our guard supplier direct on Tel. No. 01603 667957, or in the case of difficulty or for further advice contact our Customer Helpline.

#### Installation

Before undertaking installation work, ensure the electricity supply is disconnected from any relevant fixed wiring.

Supply cable is not provided with this appliance, and a competent electrician should therefore install it.

The appliance must be fitted horizontally with the cable or conduit entry at bottom right. It should be mounted such that the underside is at least 350mm above the floor and the top of the heater is 150mm below any

overhanging shelf or obstruction.

This heater must be used on an A.C.~ supply only and the voltage marked on the heater must correspond to the supply voltage.


To comply with the I.E.E. Wiring Regulations, the appliance must be earthed; the supply circuit must be adequate for the input of the appliance, and the circuit protected by a suitable 13A fuse. A suitable termination to the fixed wiring of the premises must be provided adjacent to the final position of the appliance. In this instance, such a termination can be a double-pole switch with a contact separation of at least 3mm in all poles.

**The heater must not be located immediately below a fixed socket-outlet.**

#### Electrical

**WARNING : THIS APPLIANCE MUST BE EARTHED.**

After ensuring the electricity supply is not live, electrical connections can be made, either to an adjacent double-pole switch having a contact separation of at least 3mm in all poles or to a plug-top for use in a standard 13A socket.

If the latter: Connect **Green and Yellow** wire to plug terminal marked 'E' or  **Green** or **Green and Yellow**. Connect **Blue** wire to plug terminal marked 'N' or **Black**. Connect **Brown** wire to plug terminal marked 'L' or **Red**.

Refit cover, first hooking top over the unit and then securing bottom by refitting the two screws under the bottom edge. The appliance is now ready for use and the electricity supply can be reinstated.

#### Fixing dimensions

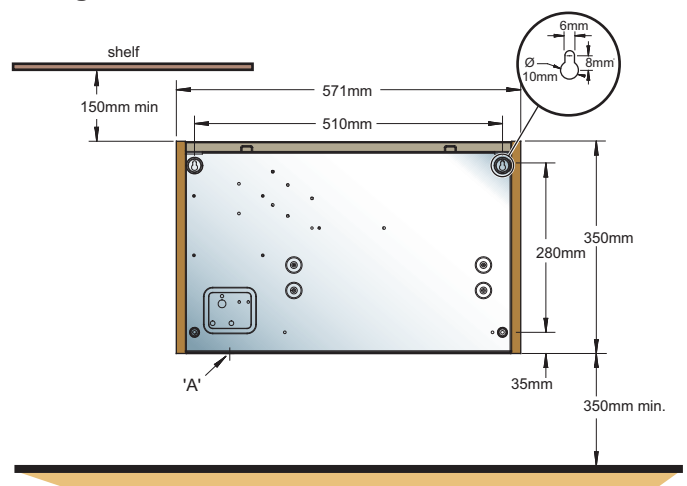


Fig. 2

## Procedure

Release the front cover from the unit by undoing the two screws under the bottom edge.

Carefully remove cover by pulling bottom-front forward, and then lift to release top from retaining slots.

Mark screw fixing positions on wall in accordance with the dimensions shown on the diagram in **Fig. 2**. The unit must be secured to the wall with four screws through the holes provided. The two upper holes are keyhole shaped to enable the two upper screws to be positioned first. The unit can then be hung on these screws while the two lower screws are positioned. Before finally tightening all four screws, ensure the unit is truly horizontal.

Fit a 3 core 1.5 square millimetre flexible cord through the cable entry bush, connect wires to the appropriate terminals and tighten cable clamp. Alternatively the heater may be connected with conduit through the base after removing the knockout containing the cable entry bush - see **Fig. 3**.

## Wiring Diagram - see Fig. 3

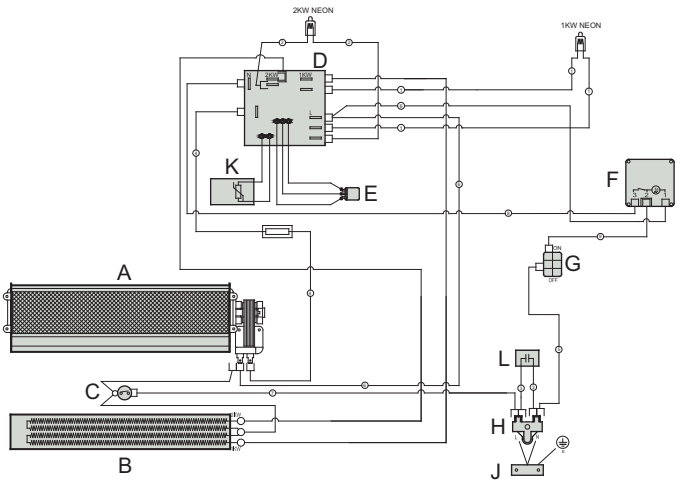


Fig. 3

## Component

- A. Cross Flow Fan
- B. Heat Element
- C. Cut-Out
- D. Electronic Stat
- E. Temperature Selector
- F. Digital Timer
- G. Double Pole Switch
- H. Tri-Clamp T/Block
- J. Cable Clamp
- K. Thermistor
- L. Capacitor

## Operation

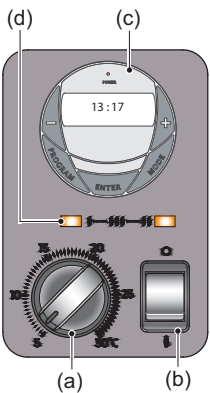


Fig. 4

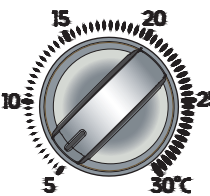


Fig. 5

The WFE3TN has a total loading of 3KW. It incorporates a sensitive electronic thermostat, and a programmable 7 day timer. To switch the appliance ON, it should be connected to the electricity supply and switched on at the ON/OFF double pole switch - see 'b' in **Fig. 4**.

### Thermostat (see 'a' in Fig. 4)

The thermostat scale is calibrated in 1°C divisions with a temperature range from 5°C to 30°C.

To control the room temperature, set the mark on the thermostat knob to the required temperature on the scale. The electronic sensor will monitor continuously the temperature of the air returning to the inlet grille, and the appropriate heater element(s) will be selected automatically to achieve or maintain the chosen level. Two pilot lights (see 'd' in **Fig. 4**) indicate when one or both heating elements are in operation. An additional pilot light on the digital timer will illuminate when the timer is in 'Manual On' mode or in 'Auto' mode with a program running. The extra sensitivity of the electronic thermostat ensures that the room temperature is maintained within close tolerances efficiently and economically.

## Digital Timer Operation - see Fig. 6

**IMPORTANT: DO NOT plug in the appliance where the load exceeds 16 Amp.**

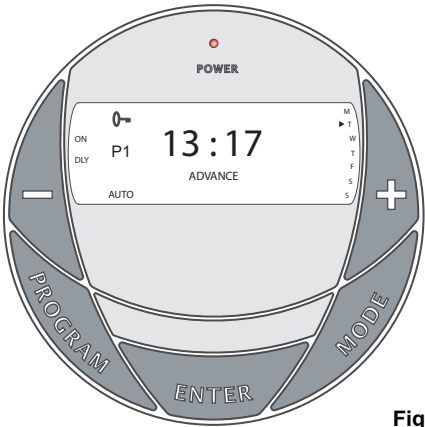


Fig. 6

### Mode Selection

There are four different operating modes. Press MODE to cycle through these:

**MAN OFF** - heat is permanently off - see **Fig. 7**. This is also the default screen.



Fig. 7

**MAN ON** - heat is permanently on - see **Fig. 8**.



Fig. 8

**AUTO DLY** - switches the heater ON and OFF everyday according to a set daily program - see **Fig. 9**.



Fig. 9

**AUTO BLK** - switches the heater ON and OFF according to a set of programs for weekdays only or weekends only - see **Fig. 10**.



Fig. 10

## Set Time

1. Press the 'Program' button ONCE. The clock symbol appears ⌚ on the top left hand side of the screen - see Fig. 11. The user can now set the clock.
2. The hour digit will flash. To adjust the hour use the '-' & '+' buttons. Confirm the hour by pressing ENTER.
3. Once ENTER has been pressed the minutes will flash. To adjust the minutes use the '-' & '+' buttons. Confirm the minute digit by pressing ENTER.
4. Once ENTER has been pressed the arrow ► will flash next to Mon. Use the '-' & '+' buttons to set current day and press ENTER to confirm and return to the default display.



Fig. 11

## Set Programme

A total of 12 ON/OFF time programmes can be set for operation. There are two programme options:

**OPTION 1;** Daily ('DLY' on display): This is a daily program function, Monday to Sunday with four ON/OFF program options available - see Fig. 12.



Fig. 12

**OPTION 2;** Block ('BLK' on display): This is a block program function, Monday to Friday with four ON/OFF program options - see Fig. 13 or Saturday to Sunday with four ON/OFF program options - see Fig. 14. Press the 'PROGRAM' key twice to set the programs starting with 'Daily ON' P1.



Fig. 13

## Setting P1 On Time

1. To set the hour use the '-' & '+' buttons. Confirm the hour digit by pressing ENTER.
2. To set the minutes use the '-' & '+' buttons. Confirm the minute digit by pressing ENTER.

Note: The minutes can only be set in 10 minute blocks.

## Setting P1 Off Time

3. To set the hour use the '-' & '+' buttons. Confirm the hour digit by pressing ENTER.
4. To set the minutes use the '-' & '+' buttons. Confirm the minute digit by pressing ENTER.

Repeat steps 1 to 4 to programme P2, P3 and P4. After programming P4 you automatically enter the BLOCK programme option. Repeat steps 1 to 4 to programme P2, P3 and P4. After programming P4 you automatically exit the BLOCK programme option.

At any time while programming the timer you can press the PROGRAM button to exit to the default display.

**NOTE:** You can cycle quickly from daily mode to block modes by pressing the MODE button.

## The Advance Function

When in AUTO MODE, if the '+' button is pressed for longer than 2 seconds the programme will ADVANCE to the next setting programmed and will only revert back to the program when the subsequent programme time is reached. When the ADVANCE function is running the ADVANCE segment will be displayed on the LCD screen - see Fig. 15. If the '-' button is pressed for longer than 2 seconds when the ADVANCE programme is running the ADVANCE feature will automatically be cancelled and the programme will run as normal.

e.g. If the present time is 14:00 and P1 ON is at 17:00 and P1 OFF is 19:00, if '+' is held for 2 seconds and remains on until 19:00. ADVANCE disappears from the screen at 17:00 as set program is then running.



Fig. 15

## Key Lock

To lock the keypad press ENTER and MODE simultaneously. The key symbol will appear on the screen when the keypad is locked - see Fig. 16. To unlock the keypad repeat the action above.



Fig. 16

**Note- Timer Memory Back Up Batteries** - Once the heater has been left plugged in with the socket switched on for at least 72 hours the timer's memory back up batteries will be fully charged.

Once the timer batteries are fully charged, if there is a power cut out or if the heater is disconnected from the mains for less than six months, then the timer will continue to keep time, and the settings in the memory will remain intact.

If however the timer batteries have not been charged fully, or if the heater is deprived of power for longer than six months, then the time and programme settings are likely to be lost and you may therefore need to reset the time and programme before using the 'AUTO' MODE again.

## General Cleaning

**WARNING : BEFORE UNDERTAKING ANY MAINTENANCE OR CLEANING WORK ON THE APPLIANCE, IMMEDIATELY DISCONNECT THE ELECTRICITY SUPPLY EITHER BY SWITCHING OFF AT THE ADJACENT DOUBLE POLE SWITCH OR BY REMOVING THE PLUG FROM THE SOCKET.**

The outside of the appliance should be wiped over with a soft damp cloth and then dried. Do not use detergents or abrasives.

The filter should be cleaned by gently passing the soft brush attachment of a vacuum cleaner over the front grille (see 'd' in Fig. 17).

## Service and Repair

**THE INTERNAL CLEANING AND MAINTENANCE WORK SHOULD ONLY BE UNDERTAKEN BY COMPETENT PERSONS WITH EXPERIENCE OF REPAIRING DOMESTIC ELECTRICAL APPLIANCES AND IN FULL KNOWLEDGE OF THE POSSIBLE HAZARDS INVOLVED.**

To ensure the appliance operates efficiently, the following maintenance should be undertaken periodically. The cover should be removed and refitted as detailed under 'Procedure'.

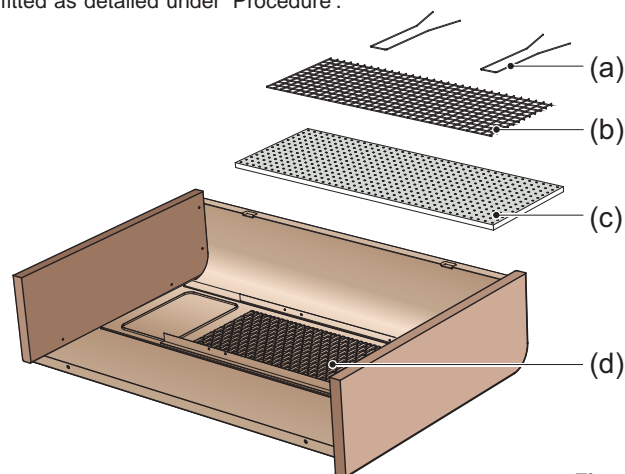


Fig. 17

**Fan Blades :** These should be cleaned by using the soft brush attachment of a vacuum cleaner. Care should be taken not to damage the blades.

**Filter** (see 'c' in Fig. 17) : The filter can be removed completely for cleaning, but generally, provided this is cleaned frequently as detailed above, this should not be necessary. Where removal of filter is required for cleaning, the filter retaining wires (see 'a' in Fig. 17) can be removed, allowing the mesh (see 'b' in Fig. 17) and the filter to be taken out.

**General :** With the cover removed, opportunity should be taken to remove any accumulations of dust from within the unit.

**Bearings :** Fan and motor bearings should be given one or two (not more) drops of low viscosity oil (e.g. sewing machine oil) approximately every 12 months.

## Thermal Safety cut-out

In the event that the appliance overheats, the cut-out switches the heater off automatically. To bring the heater back into operation, remove the cause of overheating, then turn Off the electrical supply to the heater for a few minutes. When the heater has cooled sufficiently reconnect and switch On the heater. If the cut-out operates repeatedly, contact your supplier.

## Recycling

For electrical products sold within the European Community.



At the end of the electrical products useful life it should not be disposed of with household waste.

Please recycle where facilities exist.

Check with your Local Authority or retailer for recycling advice in your country.

## After Sales Service

Your product is guaranteed for one year from the date of purchase.

Within this period, we undertake to repair or exchange this product free of charge provided it has been installed and operated in accordance with these instructions.

Your rights under this guarantee are additional to your statutory rights, which in turn are not affected by this guarantee.

Should you require after sales information or assistance with this product please go to [www.dimplex.co.uk](http://www.dimplex.co.uk) where you will find our self help guide by clicking on "After Sales" or ring our helpdesk on 0845 600 5111 (UK) or 01 842 4833 (R.O.I.) .

Spare parts are also available on the website

[www.dimplex.co.uk](http://www.dimplex.co.uk)

Please retain your receipt as proof of purchase.

**CE** The product complies with the European Safety Standards EN60335-2-30 and the European Standard Electromagnetic Compatibility (EMC) EN55014, EN60555-2 and EN60555-3. These cover the essential requirements of EEC Directives 2006/95/EC and 2004/108/EC

DIMPLEX

MILLBROOK HOUSE

GRANGE DRIVE

HEDGE END

SOUTHAMPTON

SO30 2DF

[c] GDC Group Ltd,

All rights reserved. Material contained in this publication may not be reproduced in whole or in part, without prior permission in writing of Dimplex.

A division of GDC Group Ltd,

TEL: 0845 600 5111

FAX: 01489 773050

WEBSITE: [www.dimplex.co.uk](http://www.dimplex.co.uk)

Republic of Ireland Tel. 01 8424833