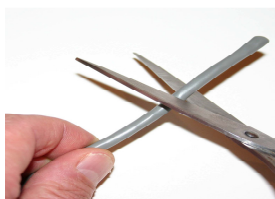


Patch Lead Construction



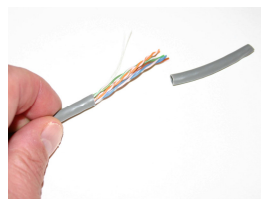
1. Tools

In addition to category 5e UTP (unshielded twisted pair) cable you will need, scissors, crimping tool, RJ45 plugs and cable testers



2. Remove outer sheath

Taking care not to cut the inner cables remove a length of insulating sheath



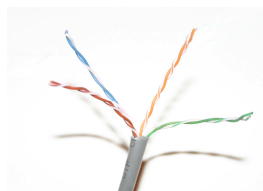
3. Removing the sheath

Discard the sheath to reveal the four parts of the twisted cable within



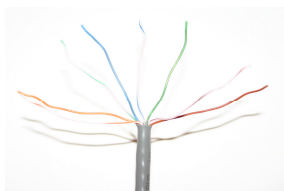
4. Cut string

Cut off the little length of string that is inside the sheath



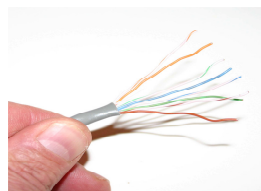
5. Separate pairs of wires

Separate out the four pairs of wires



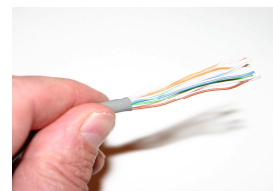
6. Separate wires

Separate wires to ease crimping



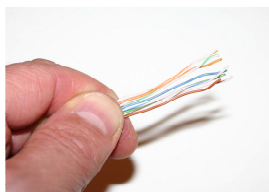
7. Straighten wires

Straighten wires to aid wire colour identification



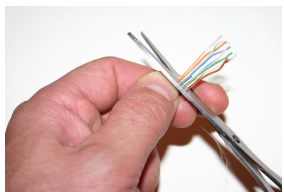
8. Pull wires

Firmly pull the wires between finger and thumb



9. Flatten wires

With wires almost parallel, make sure the correct colour order: white/orange, orange, white/green, blue, white/blue, green, white/brown, brown



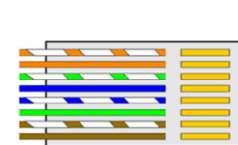
10. Trim wires

With flat and parallel cable wires in the correct order, trim to leave 12mm protruding from the sheath



11. Fit RJ45 socket

Push wires into the plug so they reach in fully. Ensure enough sheath is inside the plug so it will be physically gripped when crimped



12. Correct colours

Check you have the correct colour order before crimping. This colour order is called 568B and is common for CAT5 cable networks



13. Crimping Tool

Place the plug into the tool so that the sheath is also trapped



14. Crimping

Firmly crimp the plug so all wires and sheath are trapped



15. Finished Plug

Visually inspect to ensure correct colour sequence



16. Test

Test the finished cable using a suitable cable tester