

# **LOG FUEL EFFECT INSTALLER AND OWNER GUIDE**

# **I N S P I R E**

COLLECTION

**THIS GUIDE IS FOR FITTING THE FUEL EFFECT**

## **RUSTIC LOG 03/23492/0**

**INTO THE MODELS**

## **500RC & 500FS**

### **IMPORTANT**

**THIS GUIDE MUST BE PLACED INSIDE OR ATTACHED TO THE INSTALLER AND OWNER GUIDE SUPPLIED WITH THE GAS FIRE. IT MUST BE LEFT WITH THE OWNER.**

**THIS GUIDE MUST BE READ IN CONJUNCTION WITH THE INSTALLER AND OWNER GUIDE SUPPLIED WITH THE GAS FIRE.**

# INSTALLER AND OWNER GUIDE

All rights reserved. No part of this publication may be reproduced in any material form (including photocopying), stored in any medium by electronic means (including in any retrieval system or database) or transmitted, in any form or by any means, whether electronic, mechanical, recording or otherwise, without the prior written permission of the copyright owner.

Applications for the copyright owner's permission to reproduce any part of this publication should be made, giving details of the proposed use, to the following address: The Marketing Communications Manager, GDC Group Ltd., Millbrook House, Grange Drive, Hedge End, Southampton, SO30 2DF. UK.

Warning: Any person who does any unauthorised act in relation to a copyright work may be liable to criminal prosecution and civil claims for damages.



Valor, GDC Group Ltd., Millbrook House,  
Grange Drive, Hedge End, Southampton,  
SO30 2DF. UK

[www.valor.co.uk](http://www.valor.co.uk)

**Because our policy is one of constant development and improvement, details may vary slightly from those given in this publication**

# INSTALLER AND OWNER GUIDE

## SAFETY

This product uses fuel effect pieces containing Refractory Ceramic Fibres (RCF), which are man-made vitreous silicate fibres. Excessive exposure to these materials may cause irritation to eyes, skin and respiratory tract. Consequently, it is important to take care when handling these articles to ensure that the release of dust is kept to a minimum.

To ensure that the release of fibres from these RCF articles is kept to a minimum, during installation and servicing we recommend that you use a HEPA filtered vacuum to remove any dust and soot accumulated in and around the fire before and after working on the fire.

When replacing these articles we recommend that the replaced items are not broken up, but are sealed within a heavy duty polythene bag, clearly labelled as RCF waste. RCF waste is classed as a stable, non-reactive hazardous waste and may be disposed at a landfill licenced to accept such waste. Protective clothing is not required when handling these articles, but we recommend you follow the normal hygiene rules of not smoking, eating or drinking in the work area and always wash your hands before eating or drinking.

This appliance does not contain any component manufactured from asbestos or asbestos related products.

**NOTE:** The ceramic fuel effect may cause staining / discolouration to decorative surfaces. It is therefore advisable to protect decorative surfaces.

# INSTALLER AND OWNER GUIDE

## FITTING THE CERAMIC LOG FUEL EFFECT

The detail hand painted on the fuel effect may be slightly different to that shown.

**1.** Place the LHS base in the burner compartment. The inside face of the base should align with the burner opening (See fig.1). Ensure the LHS base is not covering the burner and it is located from any further movement forward.

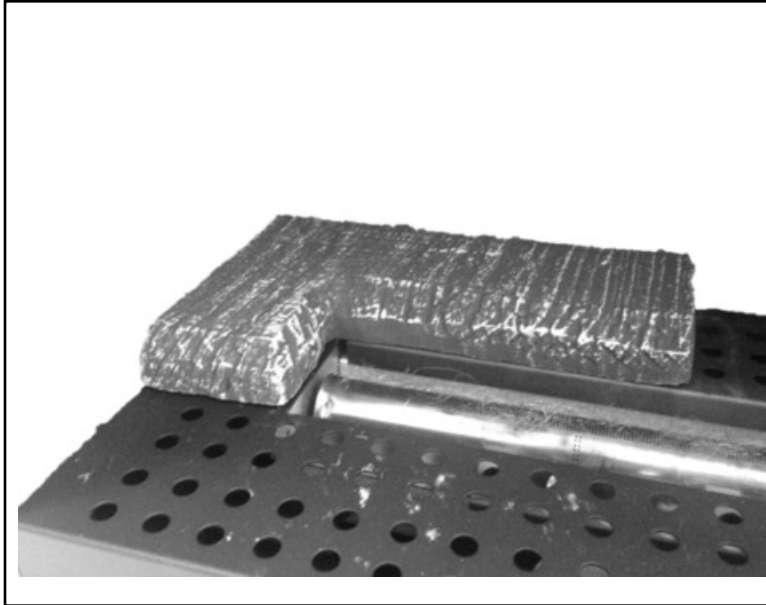


Fig. 1

**2.** Place the RHS base in the burner compartment. The inside face of the base should align with the burner opening, (See fig.2). Ensure the RHS base is not covering the burner. Align and place the RHS base to the LHS base which will locate it from any further movement.

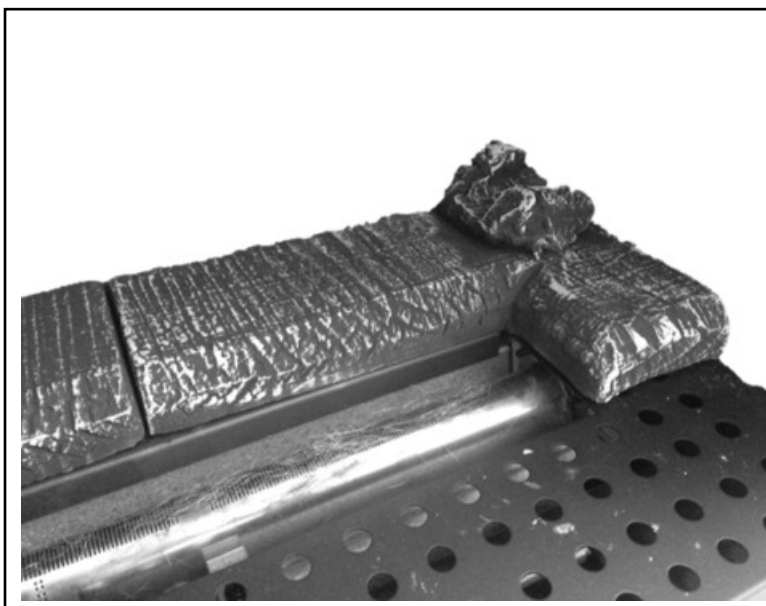


Fig. 2

# INSTALLER AND OWNER GUIDE

2. Place Log '1' in position as shown in fig.3. Log 1 has a flat side to rest on the LHS base and the RHS end of Log 1 should rest and locate into the stepped recess in the RHS base. The log should rest centered within the burner compartment.

**Note:** It is important that this rear log 1 is positioned correctly and does not cover the burner ports in any way.

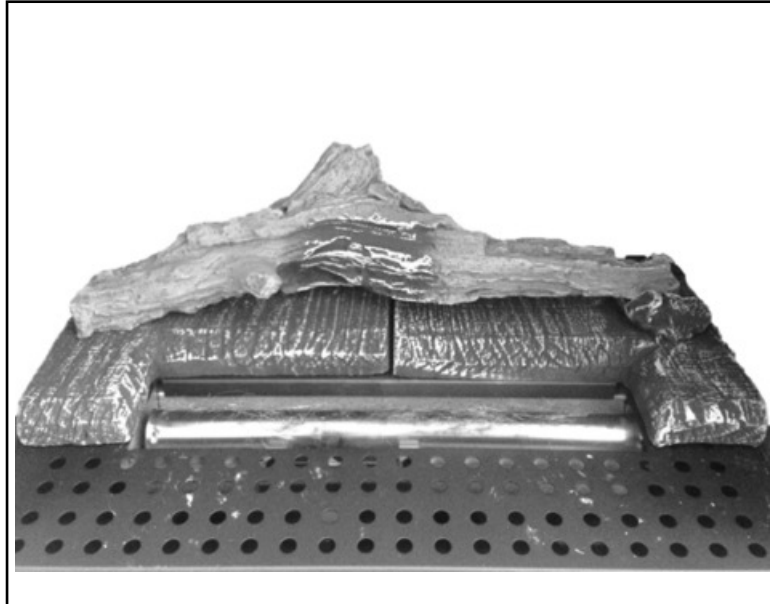


Fig. 3

3. Place the front RHS Log '2' into position as shown in fig.4.

**Note:** It is important that the rear of this log is positioned correctly and does not cover the burner ports in any way.

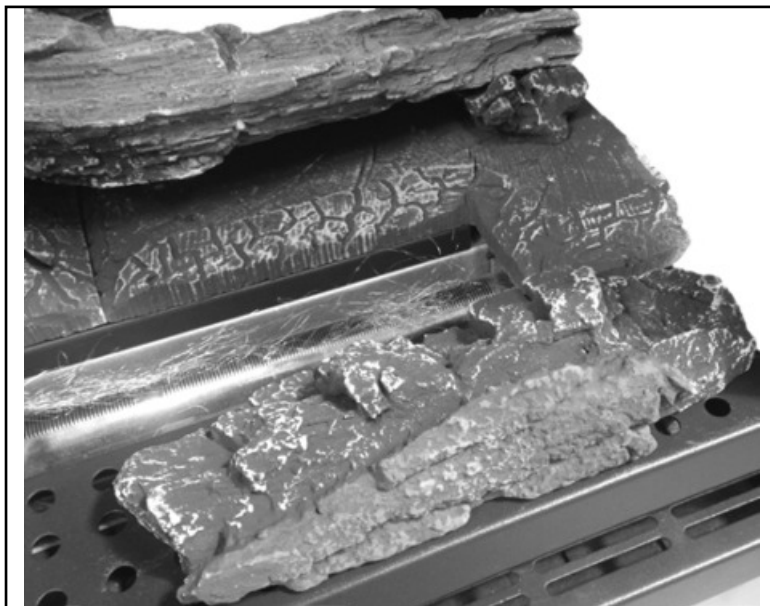


Fig. 4

# INSTALLER AND OWNER GUIDE

**4.** Place the front LHS Log '3' into position as shown in fig.5, leaving a slight gap between it and Log '2'.

**Note:** It is important that the rear of this log is positioned correctly and does not cover the burner ports in any way.



Fig. 5

**4.** Place Log '4' across the center so that it is resting on Log 3 and to its rear on Log '1', ensuring the angle, placement and orientation is as shown in fig.6.



Fig. 6

# INSTALLER AND OWNER GUIDE

**5.** Place Log '5' so that it is resting on Log '2' and to its rear on Log '1'. When placing this Log you will notice the tip of Log '5' goes just behind Log '4' as shown in fig.7.



Fig. 7

**6.** Place Log '6' so that it is resting on Log '3' and to its rear on Log '1' as shown in fig.8.



Fig. 8

# INSTALLER AND OWNER GUIDE

7. Place Log '7' so that it is resting on Log '3' and to its rear on Log '1' as shown in fig.9.

**Note:** Ensure that there is an even gap maintained between log '6' and log '4' as shown in fig.9.



Fig. 9

8. Place Log '8' so that it is resting on Log '2' and to its rear on Log '5' as shown in fig.10.

**Note:** Ensure that there is a gap maintained from Log '4' as shown in fig.10.



Fig. 10



# INSTALLER AND OWNER GUIDE

9. Full Log placement on LHS & RHS bases as shown below in fig. 11.

**Note:** It is important that all logs and bases are carefully placed to avoid any log movement during the use of this gas fire.

Refer to the numbers on the rear of each log and the arrow indicating the direction of placement if applicable.



Fig. 11

**Note:**

- The Logs 1-8 are numbered on their rear surfaces to help identify each log and some also have indicator arrows to highlight their final resting location angle.

- The placement instructions for the decorative ember wool which needs to be carefully placed onto the burner below this log set is detailed in the main Installer/User guide supplied with the fire.

Please read this carefully before fitting the log set and never exceed the weight of Ember wool supplied.

