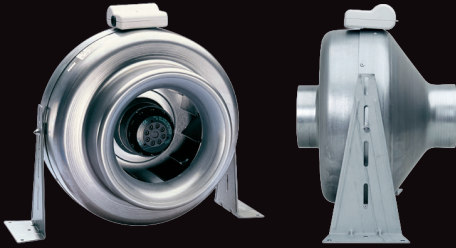


# XID

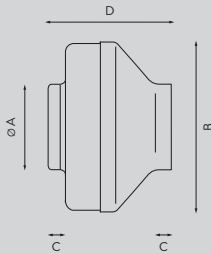
## Centrifugal metal inline fans



The XID inline range is manufactured in zinc-coated, corrosion-resistant sheet metal with 30mm long spigot connections for ease of connection to ductwork.

These practical, reliable fans are ideal for ducted applications in shops, schools, factories, offices, pubs, hotels, restaurants and kitchens, and are available in 100 – 315mm duct size diameters to suit any application.

The fan unit is speed controllable to offer flexibility and individual control, and are supplied with a universal mounting bracket for mounting at any angle. The compact and robust zinc steel construction is Class F insulation.



Dimensions (mm)				
Model	ØA	B	C	D
XID100	97	320	30	240
XID125	123	320	30	240
XID150	147	360	30	250
XID200	197	404	35	250
XID250	247	404	35	260
XID315	312	444	40	260

Product Selector	XID100	XID125	XID150	XID200	XID250	XID315
Reference Number	90101AA	90102AA	90103AA	90104AA	90208AA	90106AA
Spigot Diameter (mm)	Metal inline fan (Ø100mm duct)	Metal inline fan (Ø125mm duct)	Metal inline fan (Ø150mm duct)	Metal inline fan (Ø200mm duct)	Metal inline fan (Ø250mm duct)	Metal inline fan (Ø315mm duct)
<b>Extract Performance (m<sup>3</sup>/s)</b>						
0Pa	0.08	0.11	0.17	0.29	0.34	0.46
100Pa	0.06	0.09	0.12	0.23	0.29	0.41
200Pa	0.04	0.06	0.07	0.17	0.24	0.35
300Pa	0.01	0.03	0.02	0.12	0.17	0.28
400Pa				0.08	0.11	0.22
500Pa				0.02	0.04	0.16
600Pa						0.09
700Pa						0.03
Sound Pressure Level (dB(A)@3m)	25	26	26	29	32	36
Max. Electrical Power Rating (W)	85	85	99	157	194	244
Weight (kg)	2.5	2.5	3.7	5	5.6	6.5