

**CERAMIC LOG FUEL EFFECT  
INSTALLER AND OWNER GUIDE**

**I N S P I R E**

COLLECTION

**THIS GUIDE IS FOR FITTING THE LOG  
CERAMIC FUEL EFFECTS;**

**OAK LOG SET - 03/23414/0  
FOR MODELS  
800RC & 800FS**

**OAK LOG SET - 03/23538/0  
FOR MODELS  
1000RC & 1000FS**

**IMPORTANT**

**THIS GUIDE MUST BE PLACED INSIDE OR ATTACHED  
TO THE INSTALLER AND OWNER GUIDE SUPPLIED  
WITH THE GAS FIRE. IT MUST BE LEFT WITH THE  
OWNER.**

**THIS GUIDE MUST BE READ IN CONJUNCTION WITH  
THE INSTALLER AND OWNER GUIDE SUPPLIED WITH  
THE GAS FIRE.**

# INSTALLER AND OWNER GUIDE

All rights reserved. No part of this publication may be reproduced in any material form (including photocopying), stored in any medium by electronic means (including in any retrieval system or database) or transmitted, in any form or by any means, whether electronic, mechanical, recording or otherwise, without the prior written permission of the copyright owner.

Applications for the copyright owner's permission to reproduce any part of this publication should be made, giving details of the proposed use, to the following address: The Marketing Communications Manager, GDC Group Ltd., Millbrook House, Grange Drive, Hedge End, Southampton, SO30 2DF. UK.

Warning: Any person who does any unauthorised act in relation to a copyright work may be liable to criminal prosecution and civil claims for damages.

Valor, GDC Group Ltd., Millbrook House,  
Grange Drive, Hedge End, Southampton,  
SO30 2DF. UK  
[www.valor.co.uk](http://www.valor.co.uk)

Because our policy is one of constant development and improvement, details may vary slightly from those given in this publication

## SAFETY

**This product uses fuel effect pieces containing Refractory Ceramic Fibres (RCF), which are man-made vitreous silicate fibres. Excessive exposure to these materials may cause irritation to eyes, skin and respiratory tract. Consequently, it is important to take care when handling these articles to ensure that the release of dust is kept to a minimum. To ensure that the release of fibres from these RCF articles is kept to a minimum, during installation and servicing we recommend that you use a HEPA filtered vacuum to remove any dust and soot accumulated in and around the fire before and after working on the fire.**

**When replacing these articles we recommend that the replaced items are not broken up, but are sealed within a heavy duty polythene bag, clearly labelled as RCF waste. RCF waste is classed as a stable, non-reactive hazardous waste and may be disposed at a landfill licenced to accept such waste. Protective clothing is not required when handling these articles, but we recommend you follow the normal hygiene rules of not smoking, eating or drinking in the work area and always wash your hands before eating or drinking.**

**This appliance does not contain any component manufactured from asbestos or asbestos related products.**

**Note:** The ceramic fuel effect may cause staining / discolouration to decorative surfaces. It is therefore advisable to protect decorative surfaces.

# INSTALLER AND OWNER GUIDE

## 800 & 1000 LOG SET CONTENTS

### 800 Log set

- Ceramic bases x 3
- Log pieces x 12
- Pebbles x 10

### 1000 Log set

- Ceramic bases x 3
- Log pieces x 15
- Pebbles x 10

LHS Base Ceramic

Common to both sets

RHS Base Ceramic

Common to both sets

Middle Base Ceramic

800 set only (for log positions 5 and 6)

Middle Base Ceramic

1000 set only (for log positions 5, 13 and 6)

LHS Rear Matrix Log 1

Common to both sets

RHS Rear Matrix Log 2

800 set only

RHS Rear Matrix Log 2

1000 set only

Log 1

Common to both sets

Log 2

Common to both sets

Log 3

Common to both sets

Log 4

Common to both sets

Log 5

Common to both sets

Log 6

Common to both sets

Log 7

Common to both sets

Log 8

Common to both sets

Log 9

Common to both sets

Log 10

Common to both sets

Log 11

Common to both sets

Log 12

Common to both sets

Log 13

Supplied with 1000 set only

Log 14

Supplied with 1000 set only

Log 15

Supplied with 1000 set only

10 Pack of Loose pebbles

Common to both sets

**The following fitting instructions are for both the 800 and 1000 Oak Log sets, where there is a difference or additional logs required between each set these will be clearly indicated.**

# INSTALLER AND OWNER GUIDE

## FITTING THE CERAMIC LOG FUEL EFFECT

The detail painted on the ceramic fuel effect may be slightly different to that shown.

**1.** Place the LHS ceramic base in the burner compartment. The inside face of the base should align with the burner opening (See fig.1). Ensure the ceramic base is not covering the burner, and it is positioned from any further movement forward.

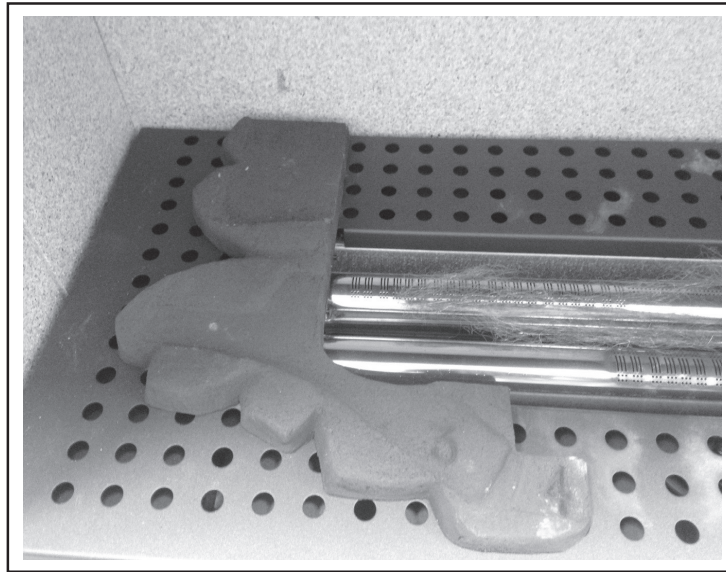


Fig. 1

**2.** Place the MIDDLE ceramic base in the burner compartment. The inside rear face of the base should align with the burner opening and slot in with the LHS ceramic base (See fig.2 applicable). Ensure the this ceramic base is not covering the pilot or burner.

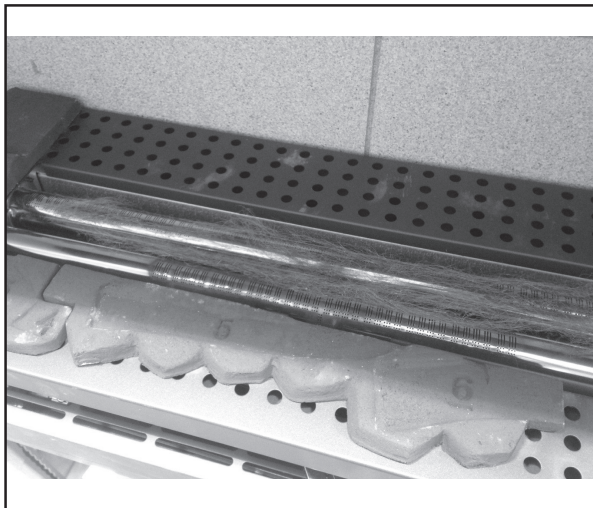


Fig. 2 - 800 Set

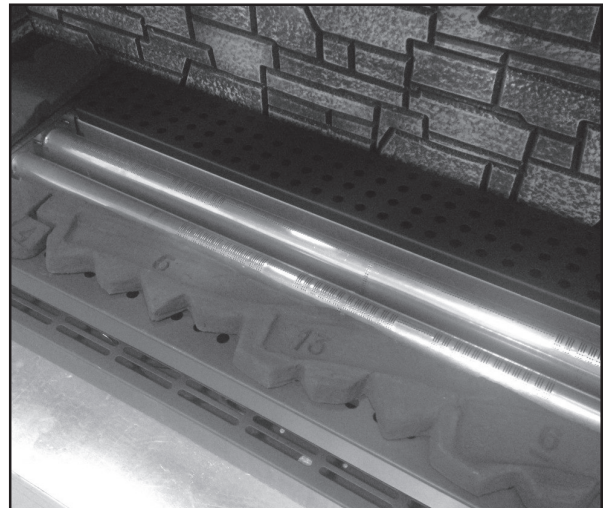


Fig. 2 - 1000 Set



# INSTALLER AND OWNER GUIDE

3. Place the RHS ceramic base in the burner compartment. The inside face of the base should align with the burner opening and the slot of the Middle ceramic base, (See fig. 3). Ensure the ceramic base is not covering the burner.

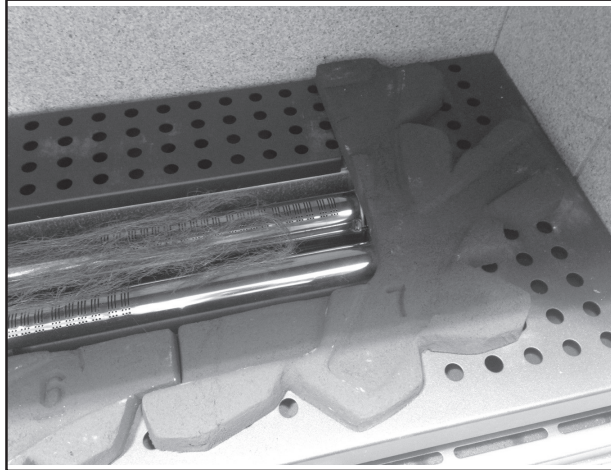


Fig. 3

4. Place the LHS rear Matrix ceramic log '1' in position as shown in fig.4. This ceramic log should locate into the recess cut in the LHS ceramic base.

**Note:** It is important that this rear log is positioned correctly.

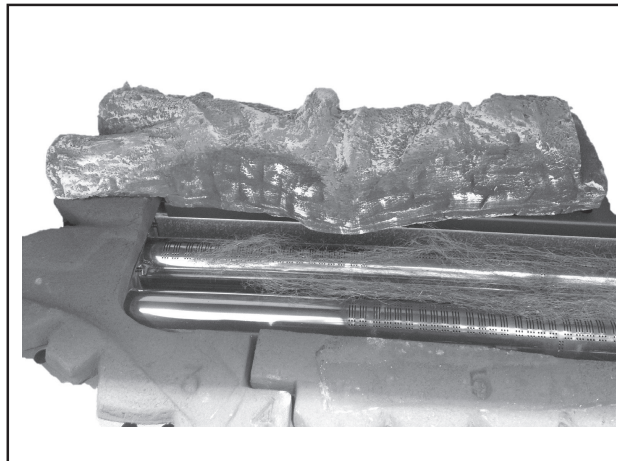


Fig. 4

5. Place the RHS rear Matrix ceramic log '2' in position as shown in fig.5. This ceramic log should locate into the recess cut in the RHS ceramic base.

**Note:** It is important that this rear log is positioned correctly.

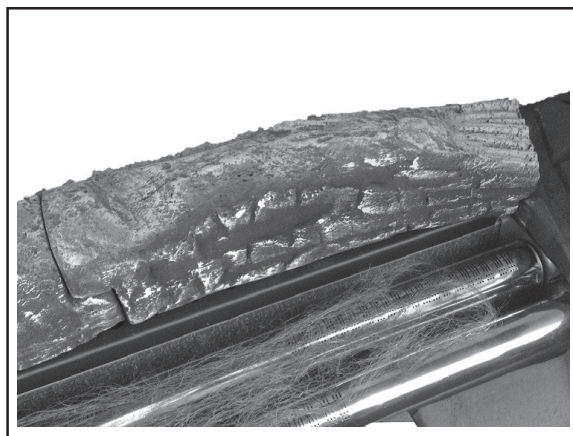


Fig. 5

# INSTALLER AND OWNER GUIDE

6. Place log '3' on to the labeled location in the LHS base ceramic as shown in fig. 6, resting the back of the log onto Log '1'.

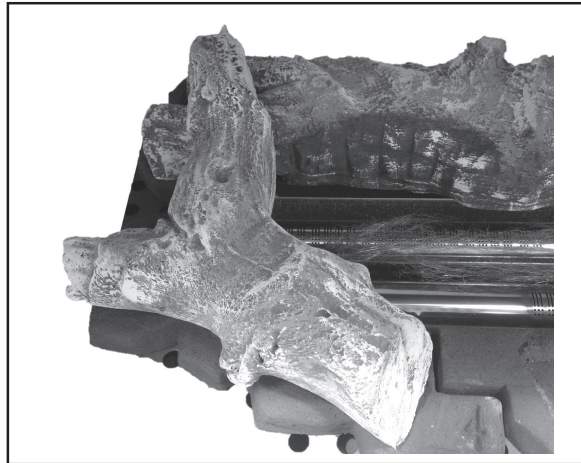


Fig. 6

7. Place log '4' to the right of log '3' so that it is resting at the front in the recess in the LHS base ceramic and to its rear on log '1', ensuring there is a gap between log '3' and log '4' as shown in fig. 7.

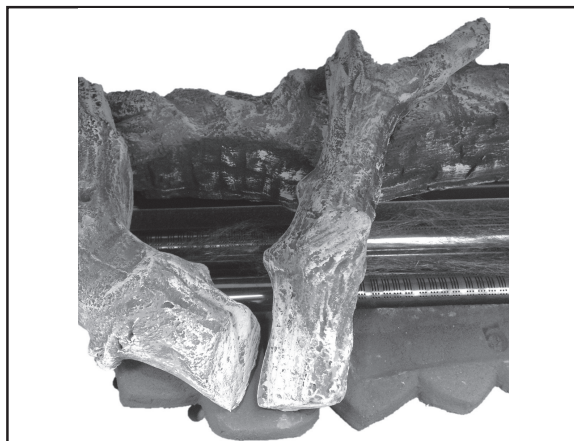


Fig. 7

8. Place log '5' on to the labeled location in the Middle base ceramic as shown in fig.8,

**Note:** It is important that this front log is positioned correctly and does not cover the burner ports or pilot below in any way.



Fig. 8

# INSTALLER AND OWNER GUIDE

**9.** Place log '6' on to the labeled location in the Middle base ceramic as shown in fig.9. Ensuring there is a gap between log '5' and log '6' as shown in fig.9.

**Note:** It is important that this front log is positioned correctly and does not cover the burner ports or pilot below in any way.



Fig. 9

**10.** Place log '7' to the right of log '6' so that it is resting at the front in the labeled recess in LHS ceramic base and to its rear on log '2'. Ensure that there is a gap between log '7' and log '6' as shown in fig.10.



Fig. 10

**11.** Place log '8' on top of log '3' at the front so that it is resting at the rear in the recess in the rear on log '1', Ensure there is a gap between log '8' and log '4' as shown in fig.11.

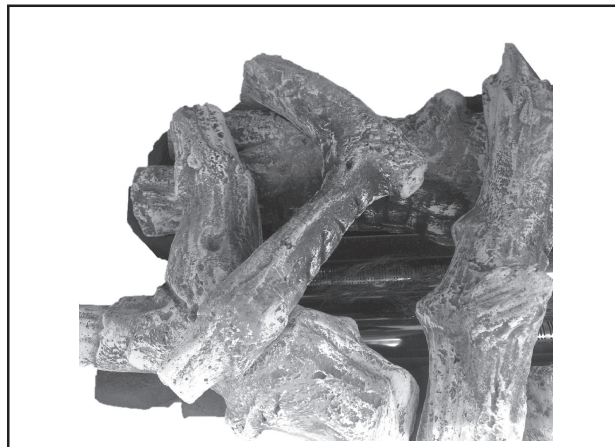


Fig. 11



# INSTALLER AND OWNER GUIDE

**12.** Place log '9' across log '5' at the front and log '1' to the rear, so that it rests steadily, as shown in fig.12.



Fig. 12

**13.** Place log '10' on top of log '6' at the front so that it is resting at the rear in the recess in the rear on log '2', Ensure there is a gap between log '9' and log '10' as shown in fig.13.



Fig. 13



# INSTALLER AND OWNER GUIDE

**14.** Place log '11' across log '6' and at the rear log '2' so that it rests steadily in the recess, as shown in fig.14. Ensure there is a gap between log '10' and log '11' as shown.



Fig. 14

**15.** Place log '12' across log '11' and log '7' so that it rests steadily in the two recesses, as shown in fig.15.



Fig. 15

# INSTALLER AND OWNER GUIDE

**16. 1000 Inspire log set ONLY** - Place log '13' on to the labeled location in the Middle base ceramic as shown in fig.16,

**Note:** It is important that this front log is positioned correctly and does not cover the burner ports or pilot below in any way.



Fig. 16

**17. 1000 Inspire log set ONLY** - Place log '14' on top of log '13' at the front so that it is resting at the rear in the recess in the rear on log '2', Ensure there is a gap between log '14' and log '9' as shown in fig.17.



Fig. 17

# INSTALLER AND OWNER GUIDE

**18.** Place log '15' across log '13' and at the rear log '2' so that it rests steadily in the recess, as shown in fig.18. Ensure there is a gap between log '14' and log '10' as shown.

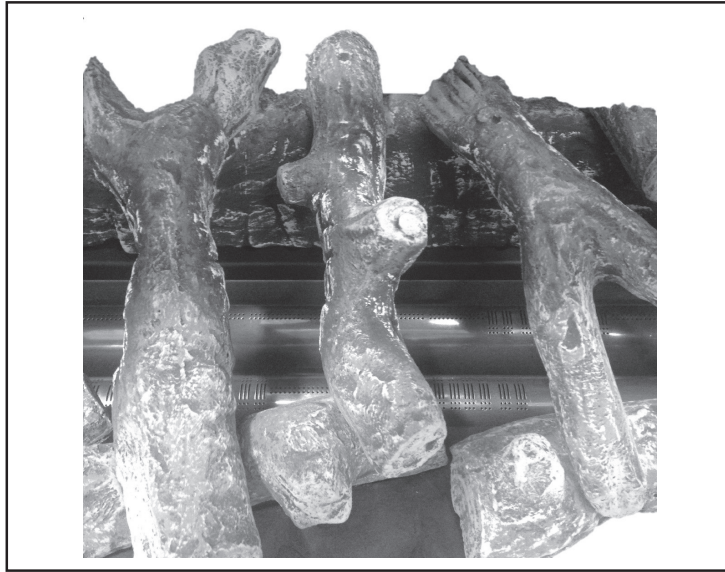


Fig. 18

**19.** Place Six of the loose black pebbles as shown in fig.19 to the side of the LHS ceramic base. Four towards the front and Two along the rear side.  
Place the remaining Four loose black pebbles as shown in fig.20 to the side of the RHS ceramic base. Three towards the front and One along the rear side.  
- These are decorative to cover over some of the holes in the burner tray metal base.

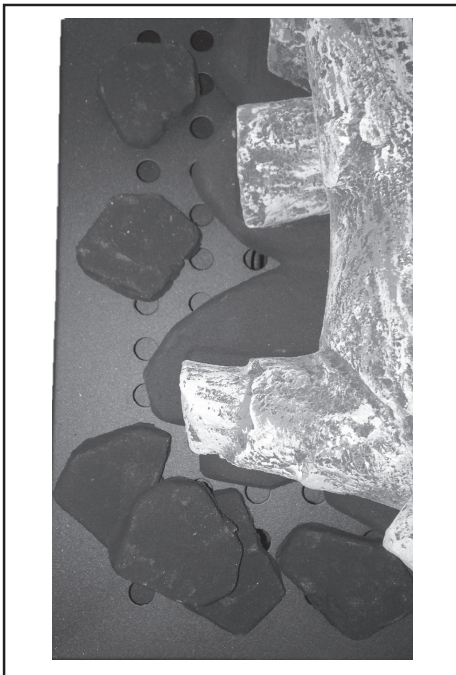


Fig. 19

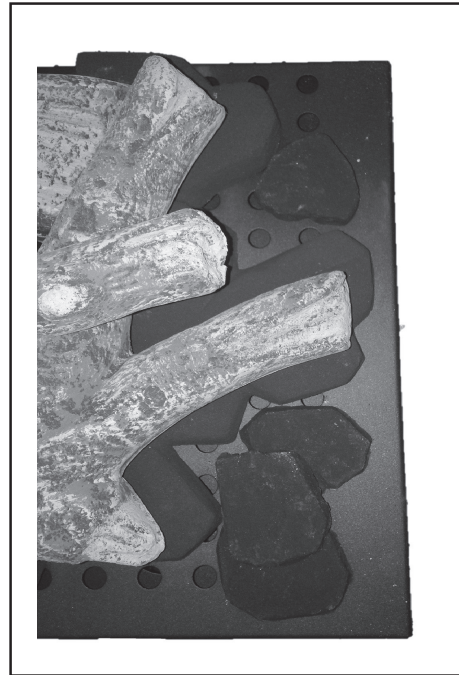


Fig. 20



# INSTALLER AND OWNER GUIDE

**20. 800 Log set** - Full Log placement on the three ceramic bases as shown below in fig. 21. (12 piece log set + 10 loose pebbles)



Fig. 21

**21. 1000 Log set** - Full Log placement on the three ceramic bases as shown below in fig. 22. (15 piece log set + 10 loose pebbles)



Fig. 22

**Note:**

- It is important that all logs and bases are carefully placed to avoid any log movement during the use of this gas fire.
- The placement instructions for the decorative ember wool which is layed out onto the two burners below this log set is detailed in the main Installer/User guide supplied with the fire. Please read this carefully before fitting the log set.